

PeaZip

Open source, portable file and archive manager

Document revision: 2018 05 05

Author: Giorgio Tani

Translation: Giorgio Tani

This document refers to:
PeaZip 6.6.0

Licensing:
Present documentation is released under GNU GFDL License;
PeaZip executable implementation is released under GNU LGPL License.

PeaZip official website:
<http://www.peazip.org>

For more information about the licenses:
GNU GFDL License, see <http://www.gnu.org/licenses/fdl.txt>
GNU LGPL License, see <http://www.gnu.org/licenses/lgpl.txt>



Content:

• How to...	3	Basic
• What is PeaZip	5	
• File manager	6	Advanced
○ Enter password	21	
○ Password manager	22	
○ Create keyfile	23	
○ Set advanced filters	24	
○ File tools	25	
• Extract archives	27	
• Create/convert archives	31	
• Save and schedule tasks	38	Expert
• PeaLauncher	40	
• Settings	41	
• Supported formats	46	Additional information
• PeaExtractor	48	
• PeaUtils	49	
• Customisation and scripting	50	
• Translations	52	
• Notes	53	

How to...

This mini-tutorial introduces the most common operations that can be performed through PeaZip, following chapters contains a more detailed explanation of the application and of terms used here.

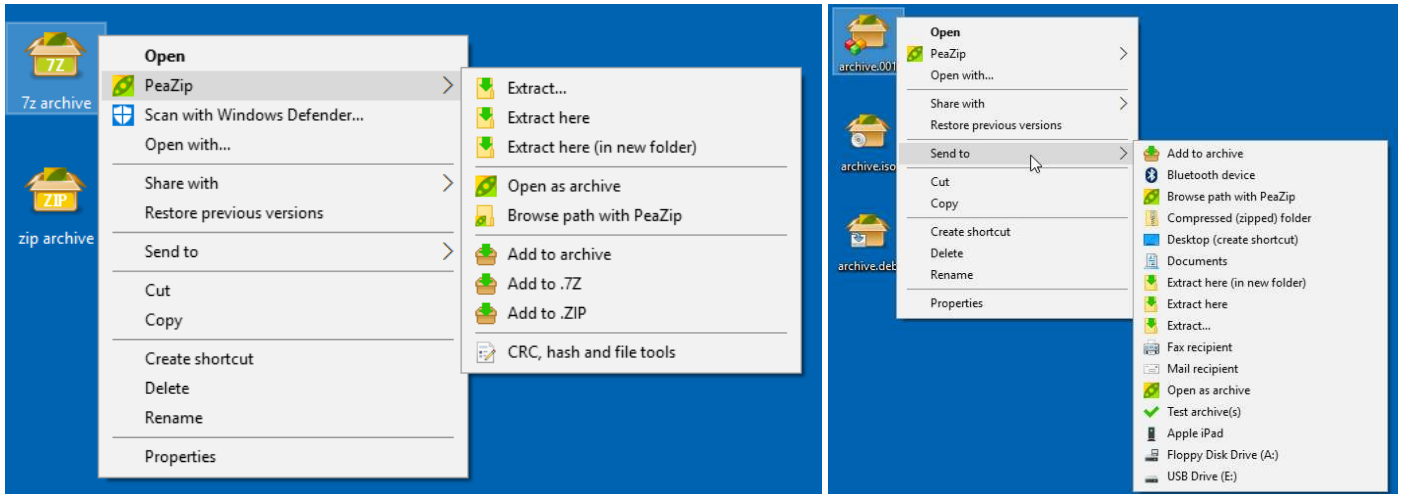


Image 1: high resolution icons, SendTo and context menu integration.

The context menu is optionally cascaded, only for Windows 7 or newer systems that supports cascading menus and display icons through static registry entry, which is now recommended over COM methods.

System integration can be customized running the installer or in PeaZip in Options > System integration, choosing "Custom installation".

Extract single or multiple archives

- **From the system**
 - rightclick on the archive(s) and in system's context menu click "Extract here" or "Extract here (in new folder)" to extract with no further interaction
 - otherwise use "Extract..." menu entry for having more options: output path, password, extract files to a new directory, chose to skip, rename or overwrite existing files etc.
- **Open an archive in PeaZip**, i.e. with doubleclick, or drag an archive on PeaZip's window or icon
 - click on "Extract" in toolbar or in context menu to extract only selected objects trough the confirmation dialog allowing to set all options (output path, password, naming policy, extract to a new directory etc)
 - click "Extract all to..." button (shortcut Ctrl+E or F12) to directly extract the entire archive to the specified folder, or click the quick extraction dropdown button on its right to extract into most common destinations skipping confirmation dialog, and to set most important options; shortcuts: Ctrl+Alt+E extracts archive in its current folder; Ctrl+Shift+E extracts to desktop; Ctrl+Alt+Shift+E extracts to documents; Ctrl+0 extracts to the previous path, Ctrl+1..8 extracts all to 1..8 bookmark's path (if defined)
 - drag files and folders to the desired destination; dragging with right mouse button, or pressing Ctrl, will popup a menu allowing to chose if to extract all the archive or only the selected content, and to extract to a fresh new folder or not (please read chapter about drag and drop in PeaZip for more information).
- **Open PeaZip**, select one or more archives and click "Extract" in toolbar or context menu, or use quick extraction destinations as explained at the previous point. Conditional drag and drop can be used also in this case (dragging with right mouse button or pressing Ctrl) to extract the whole archive, optionally in a new directory.

When a folder is sent to extraction procedure, PeaZip browses it recursively to find archives to be extracted.

Extract selected content from archive

Open an archive in PeaZip, i.e. with doubleclick, or drag an archive on PeaZip's window or icon

- click "Extract" in toolbar: only selected items will be extracted
- drag files and folders to the desired destination, only selected content will be extracted
- rightclick and in "Extract" group of the context menu click "Extract selected" (to extract only selected items) or "Extract displayed" (to extract content of current directory or of current search filter)

Browse or extract password protected archive

Click on the padlock icon to enter a password and optionally a keyfile. The icon is featured both in PeaZip's file browser's status bar and in the archive extraction interface; once the password is set the icon will change colour.

Hint: to extract multi volume (spanned) archives, place all volumes in the same folder and use "Extract all" (from context menu or program's GUI) on the first volume, that is usually identifiable for the extension .001, or .r01, .z01 and similar.

Create archives

- **From the system**
 - rightclick on objects to be archived and click on "Add to archive" in context menu or SendTo menu. It will open the archive creation confirmation dialog, more options are available in "Advanced" tab; click OK to create the archive.
 - alternatively, drag files/folders to PeaZip's window or shortcut; the same archive creation interface will be shown.
- **From PeaZip** select objects to be archived and click on "Add" button; the same archive creation interface will be shown.

Add content to existing archive

Open an archive in PeaZip (i.e. with doubleclick, or drag an archive on PeaZip's window or icon), then drag files and folders to be added in the archive (or click on "Add" button and use application's context menu to add objects to the archive). It will open the archive creation confirmation dialog, click OK to update the existing archive.

Span archive in smaller files of a pre-defined size

While creating an archive as explained in previous points, click on "Single volume" dropdown menu to select a size for output files (volumes) the archive will be split in. Most common types of archives supports this option.

Create encrypted archives

Click on the padlock icon to enter a password and optionally a keyfile; the icon is featured both in PeaZip's file browser's status bar and in archive creation interface.

To hide names of files and directories contained in the archive check "Encrypt also filenames", please note that it will be applied only if the archive will be created in a format supporting this function, like 7Z and ARC.

Note that in archive creation interface, alongside the padlock icon, there is a colour line (red for weak password, green for strong password) at the bottom of the form to visually inform if encryption is set and if the current archive format supports encryption.

Archive items in separate archives at once

Add objects to be archived (with PeaZip's "Add" button, or from system's context menu or SendTo menu) and before confirming with "Ok" check "Add each object to a separate archive" option

Convert single or multiple archives

From PeaZip select archives to be converted and click on "Convert" on toolbar or context menu, non-archive files and folders can be added as well, the difference being in archives being extracted before compression stage. Using the "Convert existing archives" switch in conjunction with "Add each object to a separate archive" (default) it performs a mass conversion of listed archives, without that switch archive conversion is meant to consolidate input data in a single archive, improving compression efficiency because it allows recompression of the original data from its uncompressed form.

Directly create an archive of specified format with given compression level

Using "System integration" procedure in Options > Settings it is possible to enable context menu entries to directly add selected files/folders to a ZIP, 7Z or self extracting archive. For Zip and 7Z formats it is also possible to enable context menu entries to compress to fastest, normal or ultra level, bypassing the default compression level for the selected format.

Save a task definition as script for future batch use

Compression/conversion and extraction interfaces features a "Console" tab, allowing to translate the task being defined in the GUI into a command line, that can be edited, tested and saved as a script for future use - i.e. automating a recurring task (as a backup), or for fine tuning, or further inspection, or for learning purpose.

Configure PeaZip

- Options > Localization (and in Options > Settings, first tab) allows to set application's **language**.
- Options > System context menu language (Windows) changes language for PeaZip entries in system's context menu
- Options > System integration starts a procedure to configure file associations, context menu and SendTo menu entries (on Windows)
- Options > Settings allows to edit applications' settings and Theme (application's icons and appearance)
- Organize menu contains entry to customize, enable or disable browser's features, like toolbar, address bar, navigation bar, etc

Please note some context menu entries, meant to provide quick access to a minimum core of features of the application (**extract, add to archive, and open as archive**), cannot be deselected during installation. Anyway context menu integration can be unchecked, preventing any context menu entry to be created.

What is PeaZip

PeaZip is a general purpose file and archive manager application, aiming to provide a cross-platform graphical interface for many Open Source archiving and compression utilities in order to handle most of available archiving formats like 7Z, RAR (extraction), TAR, ZIP and many other ones, see **Supported formats** chapter for more information.

The program features powerful and flexible inclusion/exclusion filters and search tools, provide optional two factor authentication through password and keyfile, and allows to deeply fine tune the task's definitions, exposing through a single, consistent frontend GUI the options of underlying applications.

The list of objects to be archived or extracted can be saved for future use, to speed up backup and restore tasks. Also the resulting command for archive creation and extraction can be saved, to get the full control on task's definition, helping the user in bridging the gap between GUI and console applications to get the best of both worlds. A detailed log is available after each operation.

PeaZip also collects a set of handy file management tools: robust file copy, split and join files, fast or secure file deletion, calculation of a wide set of checksums and hashes over selected files, byte-to-byte comparison of two files, web search etc.

PeaZip can be used as file manager, or can be used from **context** and **SendTo menu**. File associations and menu entries (both for context and SendTo menu) can be changed running the setup program any time it is needed.

Hint: on Windows systems you can run the installation as administrator with `runas` command, or "Run as" entry in system's context menu; on Windows Vista and newer systems UAC will automatically ask for running the process as administrator.

If no system integration is preferred, **PeaZip Portable** is available as standalone application, not needing installation and not modifying the host system; both packages are available on application's website.

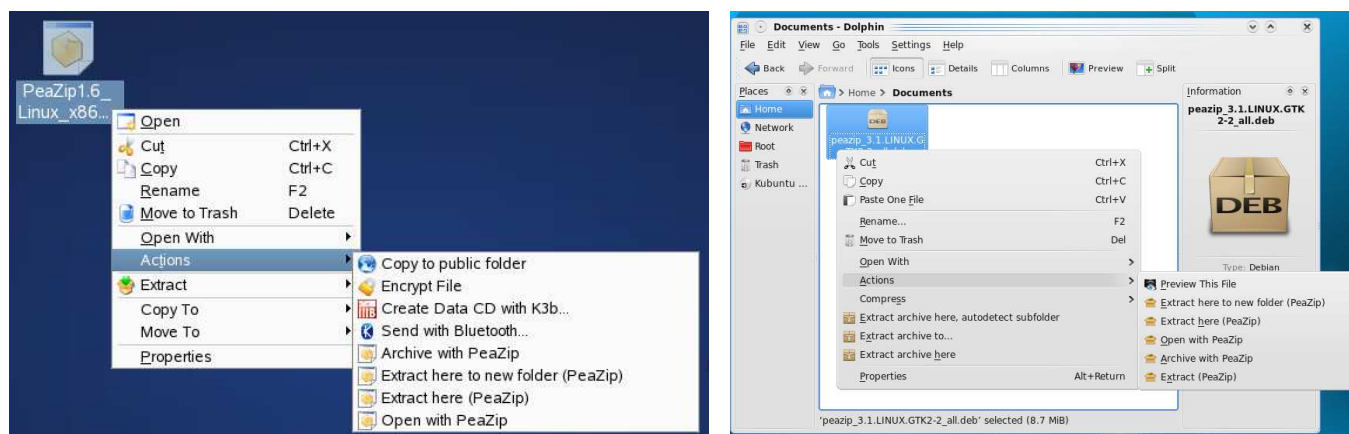


Image 2a, 2b: menu integration in Linux KDE3 and KDE4; for integrating under Gnome copy the "Archiving" folder placed in PeaZip/Freedesktop_integration/nautilus-scripts to system's Nautilus script's folder (in most versions open "Scripts" menu in system's context menu, and select "Open script's folder").

All the open source backend applications included in base packages contain only open source software released under OSI-approved licenses.

Handling formats not supported through open source software (presently, only ACE archives) requires installing separately available plugin, which contains closed source, royalty free binaries.

The list of available plugin can be browsed on PeaZip official website Add-Ons page.

File manager

The application starts by default with **file manager** interface, pointing to the last visited directory, for navigation in the filesystem and in archives.

*On start-up, PeaZip parses the input parameters trying to understand to what function they should be passed to (i.e. to open an archive for browsing, or adding selected objects to a new archive), see “**Customisation and scripting**” chapter for the startup parameters that can be passed to PeaZip, if you want to use it in scripts or customize system’s integration (registry entries, SendTo menu links etc...)*

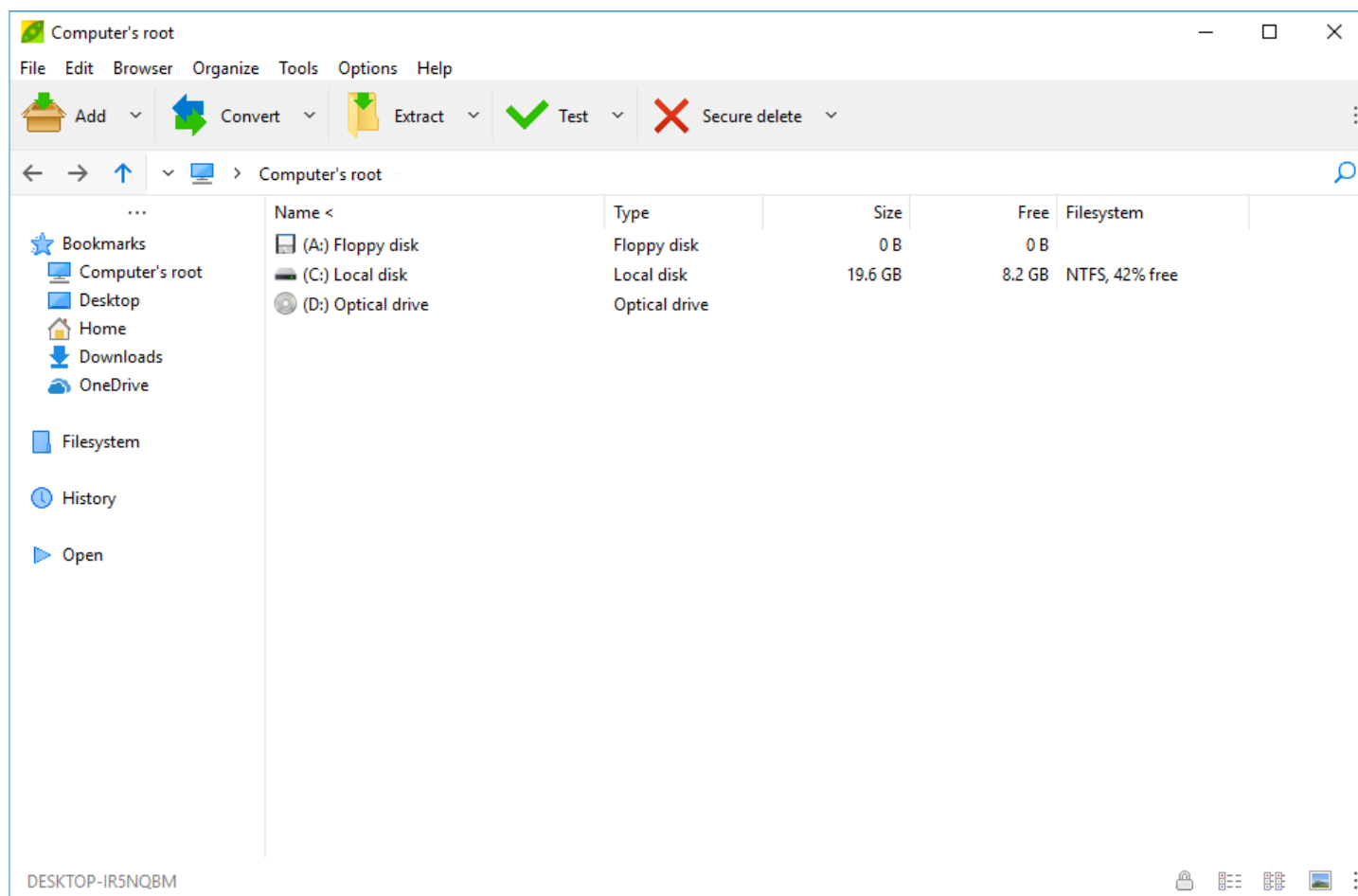


Image 3: PeaZip’s file and archive browser.

On the left, the navigation bar, the “...” sign allows to toggle the navigator view and a classic tree.

“Bookmarks” group contains user’s bookmarked archives and folders

“Filesystem” group shows a tree of mounted units and default system’s locations

“History” shows recently browsed archives and folders

“Open” group launches directory selection, file selection, and search dialog, and contains “Functions” (alphabetically sorted PeaZip’s functions) and “Applications” group - launches favourite applications, scripts or websites/webservices that can be defined by the user (defined in Settings > Applications).

When browsing an archive, its directory tree is shown above “Bookmarks” group for fast exploration of archive content.

Main menu

File submenu, contains primary application’s functions, it can be hidden / shown with Alt+F1.

Create archive activates the archive creation interface, which allows to add files and folders to the archive’s layout and to save, restore and merge layouts for further use.

In same menu are featured Bookmarks, history (can be switched off for privacy in Options > Settings); Open path and Open archive entries, invoking standard file and directory selection dialog respectively; Search and drag here which open standard system’s search dialog, to search files on the system and then drag them to PeaZip.

“Web search” allow searching for the selected filename (or an arbitrary string) on different web based services, as Google and Yahoo search engines, Wikipedia, etc, optionally on multiple websites at once.

Web search feature can help users in case of any doubt or need of any additional information about the object before archiving it or before extracting it from the archive, or for comparing an object (date, size, checksums etc...) with other known online sources.

Web search can also help in finding file names (i.e. to replace broken/incomplete downloads) on various sources: search engines, social networks, torrents, software, wiki etc.

Please remember to download only trusted files from trusted sources, and to refer to the respective Author of each content for any information about the copyright status.

Reduce to tray entry send PeaZip to tray area; right clicking on the tray icon it is possible to resume the program, or access most common program's functions.

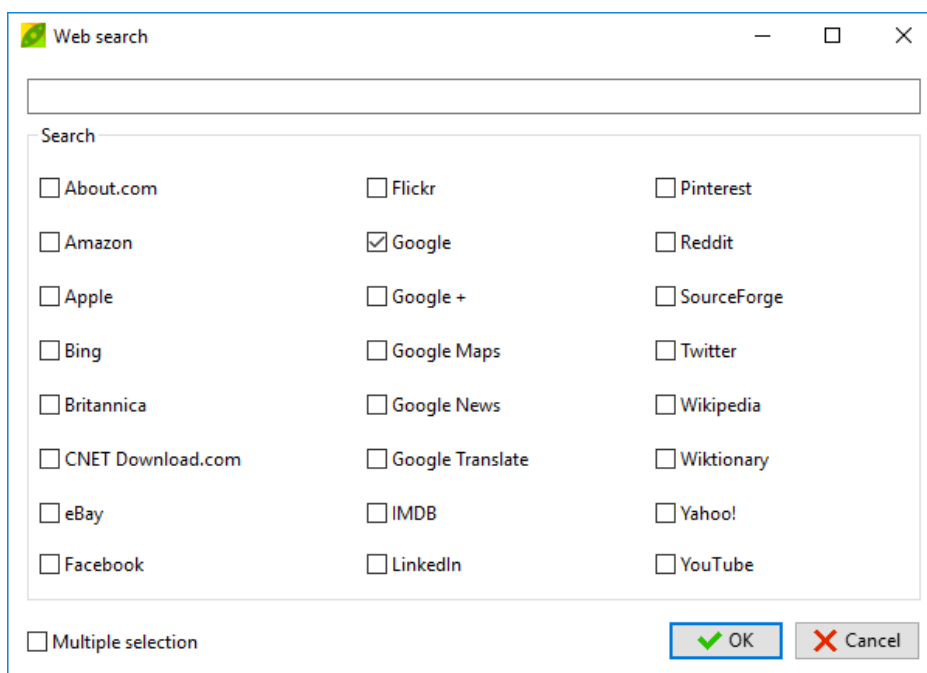


Image 4: web search form, optionally it is possible to search on multiple engines at once

Edit submenu changes the selection of currently displayed files, for date, size, extension, attributes etc...

It works either for the file/archive browser or for the archiving and extraction interfaces.

Select... entry shows a dedicated **advanced selection dialog**, featuring multiple selection options and the ability to add to / subtract from current selection. It is available also in context menu, File manager tool bar, and Search dropdown menu.

Browser submenu, featured only when file manager is displayed, contains

- jump to archiving and extraction layout interfaces
- search (in PeaZip), F3
- up one level (Alt+Up)
- go to archive's or system's root level (Ctrl+Shift+F4), Desktop (Ctrl+F4), Home (Shift+F4)
- **refresh** (F5) forcing refresh of currently displayed content
- **toggle browser/flat view** (F6), flat view displays all together the objects contained in the current path or in the archive

Organize menu allows to deeply customise the file/archive manager's aspect

- Dock the application to screen angles/sides (Ctrl+Alt+numeric pad arrows), F11 full screen, Ctrl+F11 immersive
- Customize or hide tool bar and address bar, swap tool bar and address bar to give visual prominence either to file navigation or archive manager's functions; enable or disable tab bar
- Customize browser interface: display details (default) or as list, use row selection or not (default), select columns to display, select sort column...
- Customize or hide the status bar to display different views: none, plain status bar, details, bookmarks, recent archives, history, clipboard
- Display picture thumbnails or generic icon - only for file browser, browsing archives icons are displayed
- Use classic search or simple search (default), more similar to natural language
- Set default search to recursive (search in subfolders) or not recursive ("search here")

"Tools" submenu contains:

- **Password Manager** (Shift + F9) encrypted password manager
- **Enter password / keyfile** (F9) sets the default password (and optionally keyfile, if two factor authentication is desired) to be used in browsing, testing, extraction and archive creation
- **Create random password / keyfile** (Ctrl+F9) allows to sample entropy from the system and from user's actions to generate a random keyfile; this utility can be also used to generate random passwords to be used in any other application/website/etc

- **Use advanced filters** (Shift+Ctrl+F9) sets multiple inclusion and exclusion filters to be used in browsing, testing, extraction and archive creation; filters are applied only to archive formats managed through 7z backend interface, see “Supported file types” chapter
- **Saved and scheduled task definition scripts** opens folder containing task definitions saved as script files / scheduled as system task, created from archiving or extraction interfaces, that can be run for unattended repetition of user-defined operations
- **System benchmark** utility to rate the host system in terms of MIPS (millions of integer instructions per second) and Core 2 Duo equivalent speed in MHz
- **PeaExtractor** and **PeaUtils**, standalone GUIs for extraction and file management tasks, if a reduced scope user interface is preferred.

“Options” submenu contains:

- **Run as administrator** (Windows Vista or more recent) closes current instance and opens a new one, prompting UAC elevation request, in order to work in protected paths.
- **Run as different user** (Windows only) closes current instance and opens a new one with alternative user profile.
- **Localization** change applications language.
- **System context menu language** (W7+) localize system’s context menu entries in the selected language (doubleclick the .reg file of the appropriate language and click OK to confirm merging the information in registry).
- **System integration**, to customize file associations, context menu and sendto menu entries (Windows only).
- **Settings**, to customize application’s behaviour.
- **Theme**, to customize application’s aspect.

“Help” submenu opens settings & help system interface, and points to check for updates, search plug-in and add-ons in project’s website and to most up to date documentation available, localized PeaZip tutorial (F1), and help file (Alt+F1). From this submenu it is also possible to visit PeaZip’s donation page, which allows to donate for supporting the project, or also to some suggested worldwide charitable organizations.

Tool Bar

On the right side of application's toolbar the "+" area allows to toggle the toolbar between Archive Manager, File Manager, and Image manager.



Image 5a: Archive Manager tool bar.

The **Archive Manager** toolbar features:

- **Add**
 - While browsing the filesystem, the button adds selected files and folders to the current archive layout; before confirming the creation of the archive with "Ok" it is possible to modify the list of objects to be archived (dragging them or using the context menu) as well as other options, output name etc, see "Create archive" chapter for more information.
 - While browsing an existing (writeable) archive, the button brings to the archive update interface; it is possible to add files and folders to be added to the archive as in the previous case, dragging them or using context menu.
- On the right of add button, a dropdown menu features most common compression tasks and most used formats, allowing to select items in the file browser and directly starting compression task without utter interaction.
- **Convert**
 - Convert selected archives in the desired format (non-archive files and folders can be added as well, the difference being in archives being extracted before compression stage). Using with "Add each object to a separate archive" (default) it performs a mass conversion of listed archives, without that switch archive conversion is meant to consolidate input data in a single archive, improving compression efficiency because it allows recompression of the original data from its uncompressed form.
- On the right of convert button, a dropdown menu similar to archiving one allows to directly start conversion operation with most common pre-set parameters.
- **Extract**
 - While browsing the filesystem, extracts all selected archives; before conforming the extraction with "Ok" it is possible to modify output path and other options, and to add other archives to be extracted.
 - While browsing an archive, extracts the selected items or all the displayed items if nothing is selected, like WinRar/7-Zip (it is possible to be sure to extract the whole archive using context menu's Extract all entry, or clicking "Extract all" link in extraction interface); before confirming the extraction with "Ok" it is possible to modify output path and other options.
 - Right clicking Extract button shows a menu to extract all and (when browsing archives) displayed or selected objects, for partial extraction from archives.
- On the right of extract button, an arrow shows a menu with functions to directly extract all the content of the archive to most common destinations without further interaction with extraction confirmation interface
 - In the upper area are listed most common extraction operations: **extract all to** allowing to select output directory and proceed with extraction without leaving the file browser UI, extract all here, extract all to desktop, extract all to documents, extract to 1..3° bookmarked paths (if defined), and extract to default extraction path. Only first, second and third bookmarks are shown as quick extraction destination to not clutter the menu, but bookmarks 1..8 are accessible with keyboard shortcuts Ctrl+1..8. Ctrl+0 extracts to the previous output path.
 - In the lower area it is possible to set most common extraction options: extract to new folder, naming policy (only for formats supported through 7z frontend), open output path after the task completes, set default extraction path...
- **Test**
 - Test selected archives for integrity
- On the right of test button, a submenu shows more informative functions: quick info or full listing of archive, system's file properties dialog, analysis of files and directory (showing recursively directory content and size), file checksum/hash, hexadecimal view of file content. On the bottom of the menu are featured software configured for antivirus / antimalware scan (automatically detected or as user-defined in advanced applications list)
- **Secure delete**
 - Erase selected files and folders (see File Tools chapter). Inside archives it becomes Delete from archive button. Please note that in booth cases the files being securely deleted, or deleted from archive, cannot be recovered from the recycle bin.
- On the right, an arrow shows a menu with other functions replicating some ones featured in context menu, explained in details in context menu section of this chapter:
 - File/archive manager functions

- (while browsing files) Copy to and Move to, create new folder and calculate file checksum, Quick delete, Zero delete, and Secure delete, zero or secure delete free space.
- Misc functions: Add to bookmarks, Web search (search selected item's name on the web), Explore path and Open command prompt here, to open the path being currently browsed with Explorer (or other default file manager) and command prompt respectively, Properties.



Image 5b: File Manager tool bar.

The **File Manager** toolbar features 4 areas.

The first area contains Open with button, and dropdown menu showing custom applications (can be defined by the user with Settings > Applications). If nothing is selected, this dropdown becomes a launcher for the custom applications.

The second button group contains Copy/Paste buttons; Cut, Copy to, Move to, Copy path, and Select... (advanced selection dialog) are featured in the dropdown menu on the right.

Third group contains Rename button and a dropdown menu featuring a set of common renaming operations: convert the filename(s) in **lowercase** or **uppercase**, **add a string** (or **delete n characters**) at specified position, **replace all occurrences of a string** (optionally case sensitive), **change file extension**.

Rename functions are also featured in context menu (File manager submenu).

The last area contains various file management features, similar to ones featured in the last dropdown button of Archive manager toolbar; create new folder and find duplicate files (see below File tools chapter) are featured as buttons.



Image 5c: Image Manager tool bar.

Image Manager toolbar features tree areas with quick access to functions related to manage selected graphic files (BMP, JPEG, PNG, and TIFF), operations are batch applied to all selected files of supported types, asking if modifying existing files or creating new ones.

The first area contains rotate left/right buttons and a dropdown menu with more rotation features (180°, flip vertically and mirror horizontally).

Crop button opens a dialog that allows to crop each side (top, bottom, left, right) of selected images of a given amount, expressed in percentage or in pixels.

Transform opens a dialog to resize and/or convert selected images; the dropdown menu on the right of Transform button provides quick access to most common image transformation operations: resize to a given percentage, fit to most common screen sizes, convert to other image format.

Find duplicate files and Rename buttons, and file manager dropdown completes the toolbar providing additional useful features to manage collections of images.

Address Bar and Tab Bar

In the address bar are featured back and forward arrows to navigate in previously visited path (or any previously applied search filter), and an icon to go to upper level.

The **navigation menu** is featured in the dropdown menu a the left of the address field in **address bar**; if an archive is being browsed, the nodes of current archive path are shown in the root of the menu for fast archive navigation.

Navigation menu is organized in **Bookmarks**, **Filesystem**, **History** and **Functions** alternative submenus

- **Bookmarks** menu reflects user-centric point of view, storing user defined favourite files, folders and search definitions. The menu also contains entries for adding bookmarks and activate Bookmarks panel allowing to add, edit, sort and remove bookmarks. Bookmarks can be added also from Misc > Add to bookmarks entry in file browser's and layout composer's context menus, and from History panel's context menu.
- **Filesystem** (default) menu is organized following a system-centric functional and hierarchical point of view, featuring links to commonly used paths like home, desktop, documents, mounted devices and more system defined paths. If the system supports it, there are featured also searches' and libraries' folders, respectively introduced in Vista and Seven; files in those folders can be clicked to open the related virtual folder, from which drag objects into PeaZip.
- **History** menu is a chronological point of view, displaying the history of visited paths, archives, and search filters applied during the current session; below this first section are listed latest accessed archives (this feature can be disabled for privacy, see "Settings" chapter).

- **Functions** menu shows most used functions, open path, open archives, search and drag to PeaZip, web search, open path in system file explorer, properties. It also features a submenu where most of program's functions can be found listed alphabetically.

Right clicking on navigation menu's button, on the breadcrumb, and on navigation bar (on the left of file browser), shows the quick navigation menu, featuring history (first), bookmarks, and filesystem menu, and reduced list of most used functions.

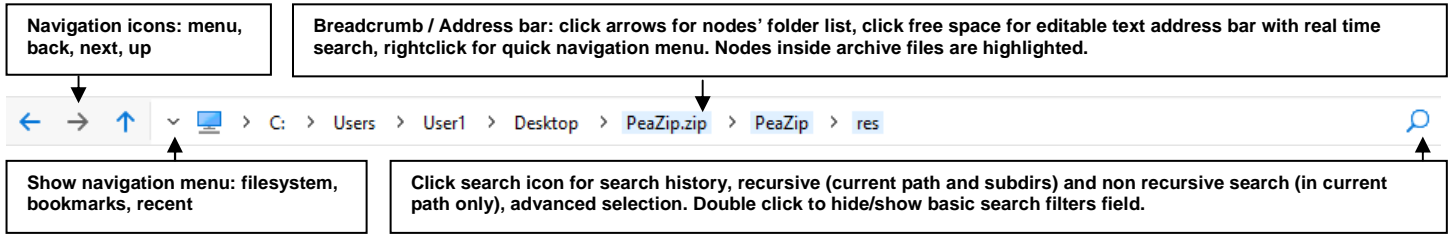


Image 6: address bar; back and next icons are greyed when non available (displaying last or first path in history)

The address field can be viewed as breadcrumb or as address string.

The **breadcrumb** allows to click on parent folder levels in order to quickly navigate the file system (up to 8 levels represented) and inside archives (up to 4 levels represented, highlighted), the first path is always the root level (computer icon).

Clicking on arrow spacer icons between breadcrumb nodes displays list of file system (or archive) directories at chosen level.

Clicking on the breadcrumb's free space transforms it in **address field**, which allows editing and cut/paste (with its own proper context menu for text field editing), and performs real time search while typing in the address field.

Real time search filters content of the file browser (browsing, flat view, or search results) to match input, including wildcards.

Refresh icon on the right of the breadcrumb address bar shows the quick navigation menu (featuring refresh function). The icon is greyed until the browser is ready. During long operations it changes in a "stop" icon to abandon current instance.

Search (F3) field is on the right of filter's field, it can be used for basic recursive and non recursive searches; * (string) and ? (single character) wildcards are supported.

"Simple search" switch in Organize menu allows close to natural language search.

Click on search icons shows history of previously searched strings, Search... (advanced search dialog) and Select... advanced selection dialog (a fast alternative to search to identify objects matching desired filters).

Please note that this basic search filter is overridden by advanced filters (Shift+F9), only for archive types allowing inclusion/exclusion filters (i.e. 7z, rar, tar, zip...).

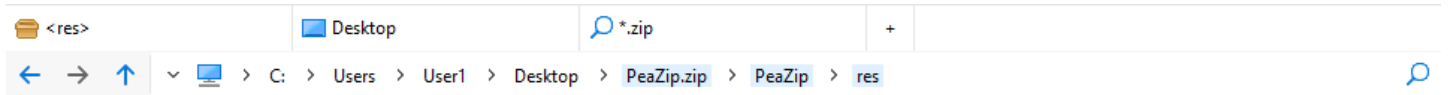


Image 6b: tab bar, and address bar showing path (or search filter) of active tab

Tab bar, above address bar, enable tabbed browsing.

Tab bar is toggled on/off flagging "Tab bar" entry in Main menu > Organize, also featured in address bar's and tab bar's context menus. The bar is also activated clicking "Open in a new tab" in application's context menu.

Active tab is shown with tab name between "<" ">" characters.

New tabs can be created from "+" tab (on the right of the bar) or from context menu "New tab", cloning the selected tab.

Tabs can be closed from tab's context menu, which allows to close selected tab, all other tabs, or tabs on the right of selected one.

Tabs can be arranged and resized; collapse / expand entries in tab's context menu set them to default small/large sizes.

Tab's context menu features "Bookmarks" submenu to add selected tab to bookmarks, and to organize (sort, delete) existing bookmarks.

Navigation Bar

To quickly jump to desired directory or archive PeaZip offers a **navigation bar** (see Image 3) on the left of the file browser, showing either navigation shortcuts (system's paths, user-defined bookmarks, recently visited archives, most common operations) or a classic treeview, clicking on the top area of the navigation bar toggle between bar modes; the bar can be hidden in Organize menu.

While browsing an archive file, navigation bar will show in-archive directory tree structure before navigation shortcuts (bookmarks, system, recent, operations), that can be used to navigate the archive. A context menu item allows to expand / collapse the structure in a single click in order to immediately explore archive structure.

Status Bar

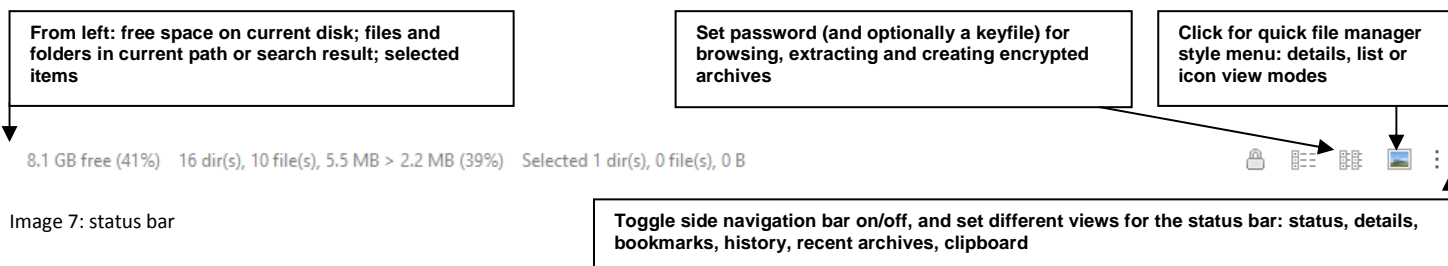


Image 7: status bar

The padlock icon, first icon in status bar icon group, as well as “Enter password / keyfile” menu entry (F9) allows to set password and keyfile to be used when operating on archives (browsing, extracting/testing or creating encrypted archives); this information is kept for the current session, and can be different for each separate instance of the application.

Encrypted content, while browsing an archive, is shown with a ‘*’ appended to filename.

If the archive is encrypted and the password is not provided, a popup will ask the user to enter the password/keyfile when extract/test/list operation are attempted.

If the password/keyfile is set, the padlock icon is changed to highlight that.

Keyfile is not mandatory, it can be used if two factor authentication is preferred to password-only authentication; keyfile creation utility can be launched from Tools menu or with Ctrl+F9.

If the directory structure area is encrypted (i.e. .7z archives created with `-mhe` option), browsing is not possible until the correct password/keyfile is provided: the archive browser will be empty and “no matches” will be displayed in the status bar until it becomes possible to browse the archive, having the user provided the right password.

Please note the same can happen when the archive cannot be browsed for other reasons, i.e. it was corrupted due to bad download or storage media failure. When strong encryption is involved, it may not be possible to determinate if the the provided password is incorrect or if the file is corrupted, since resulting output will be random-looking in both cases.

Featured views in the status area can be toggled from the right side:

- **None**, hide views to maximize browser’s area (can be set from Organize menu in main menu and context menu)
- **Status bar** (default) displaying synthetic information about the currently selected and displayed content
- **Details**, which gives more detailed information than the status bar
- **Bookmarks** shows bookmarked files, folders and archives, bookmarks can be dragged to arrange them in the desired order, clicking on the leftmost column of the Bookmarks table; otherwise the bookmarks can be arranged alphabetically by bookmark’s path or by description clicking on the respective column’s header (clicking again will invert the order). It is possible to open bookmarked objects with PeaZip with doubleclick, but from bookmarks’ context menu it is also possible to explore object’s path with PeaZip or system’s file manager, and to open command prompt in item’s path.
- **History** collects recently visited archives and paths
- **Clipboard** allows to check objects currently cut and/or copied, and to remove single objects from clipboard if it’s need to refine the selection. Clipboard behaviour can be switched between two modes:
 - **Standard clipboard** (default) behaves like usual file browser’s clipboard, allowing a single cut or copy operation. Any further selection replaces the previous one, and on paste operation cut objects, have been moved, are removed from clipboard, while copied objects are kept in clipboard.
 - **Advanced clipboard** allows to store multiple (and mixed) cut and copy operations; any selection is added to the previous ones (if objects are duplicate, previously selected are kept), even from different paths and disks, and executed on paste operation, which clears the clipboard content.

Views can be closed, returning to default status bar, clicking on the gray title bar of the view.

Bookmarks								
Bookmarks	Full name	Name	Include	Exclude	Notes	Used	Last visited	Date added
	Browsing	Computer’s root	Computer’s root	*		0		2017-03-25 08:31:07
	Browsing	C:\Users\User1\Desktop\	Desktop	*		1	2017-03-25 08:40:53	2017-03-25 08:31:07
	Browsing	C:\Users\User1\	Home	*		0		2017-03-25 08:31:07
	Browsing	C:\Users\User1\Downloads\	Downloads	*		0		2017-03-25 08:31:07
	Browsing	C:\Users\User1\OneDrive\	OneDrive	*		0		2017-03-25 08:31:07

Image 7b: status bar showing Bookmarks view. Chose view clicking on right side of the panel (hamburger menu icon), close views returning to status bar clicking on the view title area (gray).

Drag And Drop

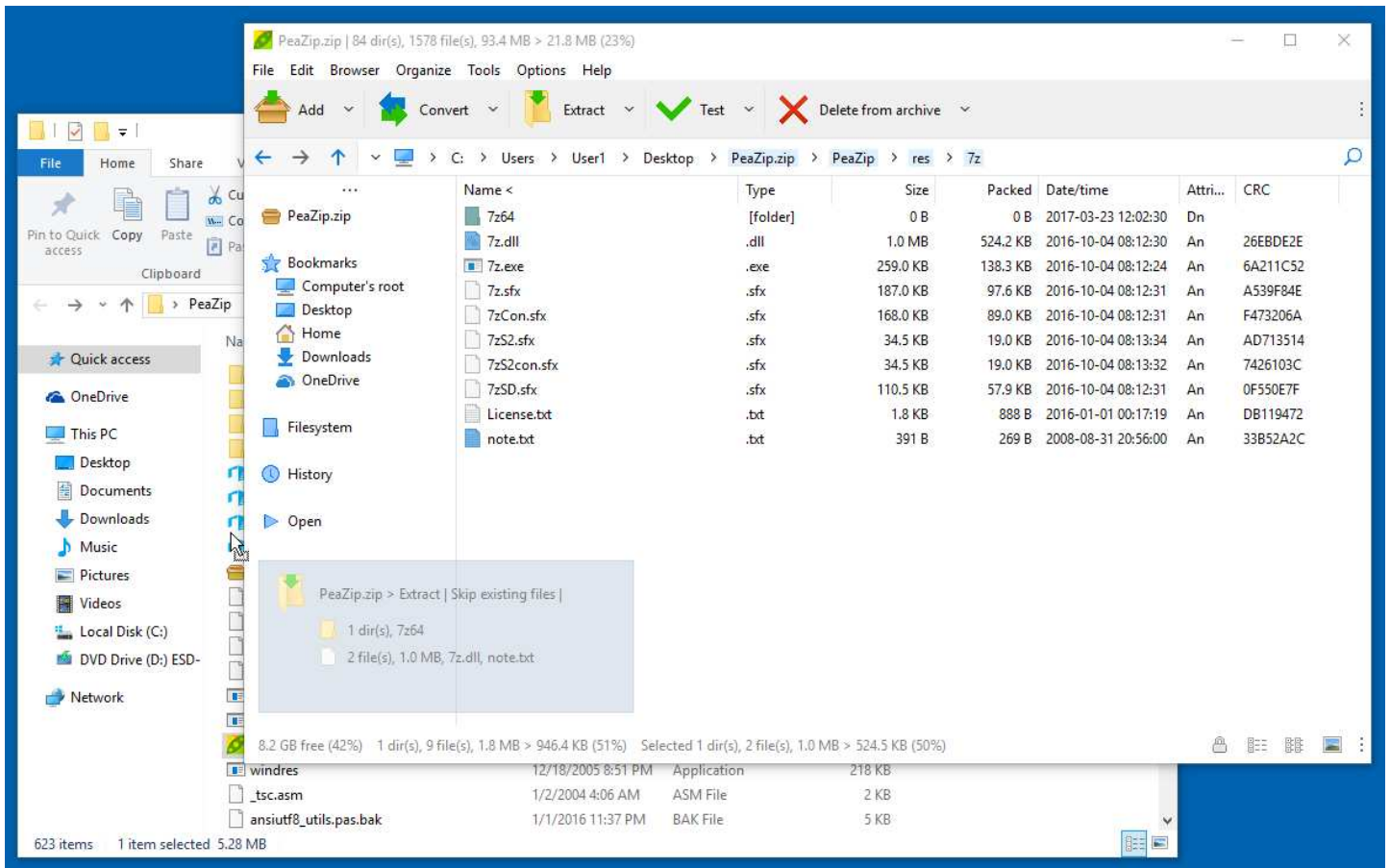


Image 8: drag and drop from application to system (Windows only); for extraction or copy/move files operations, items can be dragged to the desktop or (file)Explorer's windows with Address field enabled (default on all Windows systems). Drag and drop operations, as well cut/copy selections, are cancelled pressing Esc

The file browser supports **drag and drop from system to application**, pressing Ctrl when dropping to the application will display a contextual menu for directly accessing the desired function, add to archive, open in PeaZip, copy or move here.

When files and folders are dragged to file manager, they get listed in the archive creation interface (as if they were selected and added with "Add" button), allowing to fine tune the task before confirming, or cancel the task.

If a single archive file is dragged to the browser PeaZip will show a disambiguation popup to ask if adding the object to the archive or rather opening it.

In the same way, objects dragged into the browser while browsing an archive will be added to the current archive, if the file type allows modifications.

In example, it will not be possible adding objects to archive types supported only for reading, or to some solid archives.

It is also not possible to add objects to some container types, like i.e. .jar files, MS Office and Open Office documents etc, that are derived by other standard formats (i.e. zip, tar etc) but features specific fields (i.e. digital signatures) not featured in the original standard.

In those cases, while PeaZip can be an useful resource to inspect and extract, it is recommended to use a specific tool for editing those files.

PeaZip checks file extension to prevent improper modifications to those file types, so if it is necessary to bypass this security recommendation it is possible by changing the file extension in one with read+write support (i.e. .zip) to be able to edit the file with PeaZip.

PeaZip also supports **drag and drop from application to system**, for copying/moving files and for extraction from archives, accepting as target the desktop or any path open in a system's file explorer window.

Extraction from drag and drop write directly to the specified output path, without need to extract files to a temporary system work path; in other words it bypass standard system's drag and drop handler so PeaZip is always in charge for the operation, rather than passing it to the system.

Advantages PeaZip's custom drag and drop handler are:

- Improved security, as no write operation occurs outside the intended output path that may have different security policies than the system's temporary path.

- Improved performances if the target directory is on a different physical or logical unit than system's temporary path (quite common for network or removable units), as the data is written only once to disk – otherwise it would need to be written twice, first time in temp path, then in output path, which increases operation times and doubles disk usage/wear.
- Unlike custom drag and drop, standard drag and drop operation will fail if not enough free space is featured in system's temp path.

Thumbnails

In main menu > Organize it is possible to set file browser to **show picture thumbnails** (by default off in details mode and on in icon mode), or to show generic picture file type icon.

Thumbnails are only available browsing the file system, not while browsing archives: no data is automatically trusted to be extracted from archives (even for temporary preview purpose) without the explicit intervention of the user.

Thumbnails can be toggled on/off in context menu > Navigation and in main menu Organize > Browser; in same menus are also available pre-sets with most common combinations of icon (or thumbnail) sizes and browser layout styles.

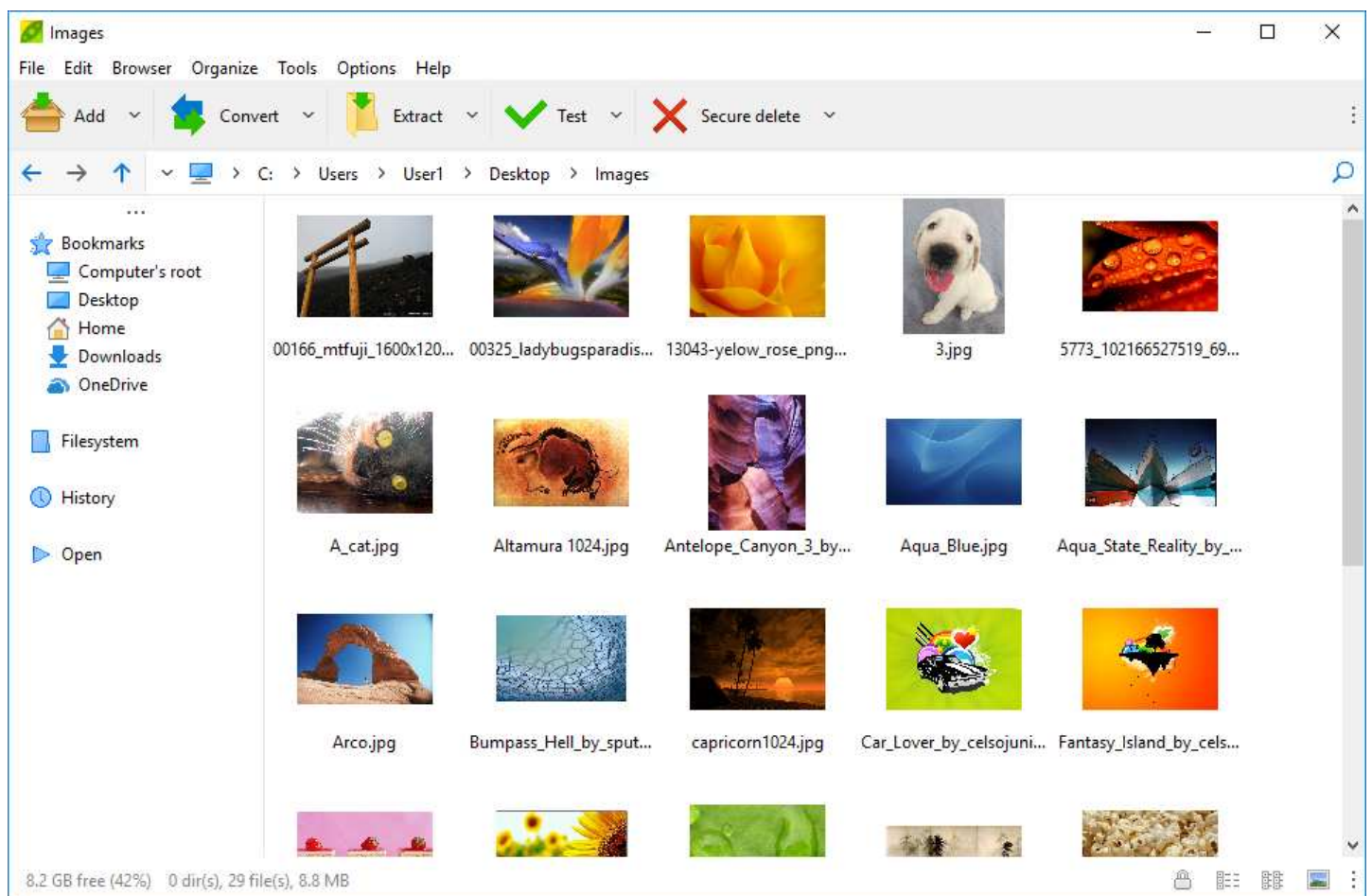


Image 9: browser in "Icons and images" preset showing medium sized image thumbnails.

In Options and in Context menu > Navigation are featured many more settings and presets any combination of style and size. Thumbnails are shown only browsing the filesystem (off by default), not while browsing archives. Images are calculated in real time with multiple threads and no image cache is ever saved.

Thumbnails are generated in real time, PeaZip does not save thumbnails (neither as a temporary files), this is especially useful if PeaZip is used as portable application (or when privacy is important), as no track is let on the system and no extra space is taken. Thumbnails calculation generates a set of 4 dedicated threads, if folder or search filter is changed a new set of threads is created and old threads are stopped as soon as possible (file level and thread level granularity: each thread can be stopped separately, at the completion of each image).

File Browser

In the file browser, clicking on **titles bar** column's header sorts displayed objects by the selected column i.e. name, full (file and path) name, extension, date, size etc; a second click inverts the order.

Archives contained into another archive will be opened in a separate instance of PeaZip; please note that by default this is a "preview" operation, extracting data to a temporary folder (by default in the same path, if writeable).

*Hint: to open multi volume archives, the first volume (i.e. the one with **.001 extension**) must be selected.*

Info column, when browsing filesystem, shows '+' for known archive file types (open with double click), and '.' for known file types usually not handled as archive, i.e. MS Office files (open with context menu "Open as archive").

For graphic files (if the file browser is set to display thumbnails), Info column reports about the image: width, height, colour dept. When browsing archive files "Packed file size" column is featured instead of "Info", however only some archive formats, i.e. ZIP, features information about packed size for single items.

*Hint: unsupported file types can be forcedly open as archives in PeaZip as **custom format**: this allows to use an arbitrary binary, and to customize the command's syntax, for dealing with them.*

*Otherwise, context menu **Open as archive** forces trying to open unknown file formats through the 7z/p7zip backend, so it is useful for opening a file thought to be a variant of another format as zip, tar, cab etc, rather than switching to the "Custom" interface.*

The browser can switch between **flat view** mode, displaying all objects contained in the archive, and classic browser mode, using "Toggles browse/flat view" (F6) in main and context menus.

Flat view is used also when performing basic search or applying advanced filters; opening a folder will browse it in classic mode, exiting the flat view mode.

Manually switching to flat mode (F6), or using search or filter feature, will allow displaying all the content of those archives.

Extraction, listing and testing of the archive is not affected by this issue.

*ACE, ARC, *PAQ, PEA and QUAD/BALZ/BCM archives can be browsed by PeaZip in flat mode only.*

While browsing 7z/p7zip supported archive types, "Rename" and "Move to" options are available, through in-archive rename function - "Rename" changes object name keeping path constant, "Move to" keeps name constant and allows to change path. Those functions allow to change structure of existing archive, without having to rebuild the entire archive.

Context Menu

The browser's **context menu**, activated right clicking on the archive browser area, is organized in 4 areas, and is context sensitive as provides different options while browsing the filesystem or archives of various types (which supports different operations).

Archive management

The top area features **archive management**-related entries: **Add**, **Convert**, **Extract**, **Extract all to...**, **Test**, **Info** (synthetic information about the archive), **List** (applies also to uncompressed files/folders), and **List (with details)** for a in depth report of archive content. While browsing the filesystem **Add** will send selected files and folders to the archive layout, while browsing an archive it opens a submenu allowing to add files or folders or to open a search dialog from which files/folders can dragged into the archive itself. In this case objects will be archived starting from archive's root, compressed and encrypted accordingly to the archive's settings.

Note: currently adding objects to archive adds them in archives root.

If it is needed to add objects to a subfolder of the archive, a workaround is to place the files in a folder (or nested folders) with that name, and then add that folder to the archive: this will place the file in archive's subfolder with same name.

I.e. to add thisfile.txt to \thisfolder1\thisfolder2\ subfolder in the archive, create thisfolder1 (where you prefer on the disk), create thisfolder2 into thisfolder1 and move (or copy) thisfile.txt into thisfolder2. Adding or dragging thisfolder1 to the archive will place thisfile.txt in the desired subfolder \thisfolder1\thisfolder2\ of the archive.

Please note that if it is possible for the archive format to store objects with different passwords into the same archive (i.e. in .7z format), you can set the different passwords each time you add objects.

*Note **adding files/folders to encrypted .7z archives**: .7z archive format can store objects encrypted with different passwords in the same archive, so when adding an object to an encrypted 7z archive the object will be encrypted with the password/keyfile currently set (in the form which popup clicking on the padlock icon).*

If the .7z archive is encrypted with "Content and filenames" option, objects can be added only using the same password / keyfile for the whole archive.

By default, if same object exists in the archive (same name and same path in archive's directory tree), the object will be updated: if the object the user is adding is newer, it will replace the older object; if it's older, the archive will not be updated.

Please note that for some archive types, notably most solid archives (i.e. .7z created with solid archive switch enabled), or archive types supported only for browsing extraction (i.e. CAB, RAR...), doesn't allow neither add/update nor delete operations.

Convert entry allows to convert files/folders or existing archive(s), even of multiple mixed types, in the desired output format, either converting single archives or consolidating input in a single output archive (recompressing the original content)

Extract and test/info functions (in "More" submenu) are shown disabled when no archive is selected.

While browsing archives, extraction and test/info functions are transformed in submenus allowing applying the action to the whole archive, or only to displayed or selected objects.

It's recommended to use "displayed" selection to operate on all displayed objects rather than extend the selection to all objects, because it's faster for the user and because it allows to compose the command in a more elegant way, using current filter definition rather than enumerating all objects.

On the bottom of the first area is displayed "Enter password / keyfile": clicking it will display password form in order to set password to open archives, or for creation of new encrypted archives.

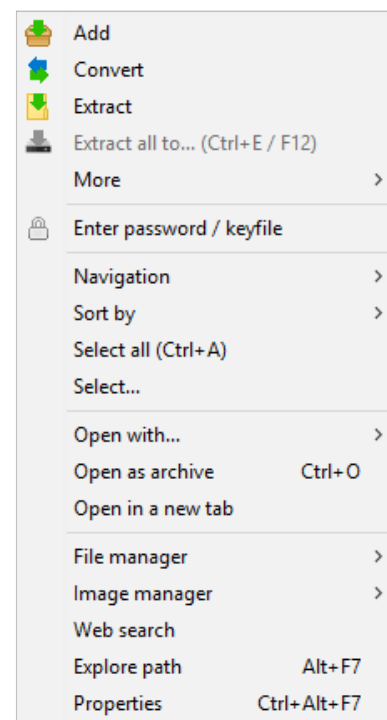


Image 10: Application's context menu

Browsing

The second area contains features related to navigate, and to manage the file browser.

“**Navigation**” submenu allows to add / manage Bookmarks, open archives and paths, switches flat (show all) view, and save list of current files/dirs (including size, date, attributes, checksum if present, etc) to TXT file.

“**Organize**” submenu provides a selection of settings of main menu “Organize” features to customize most common file manager’s parameters: apply preset, change mode (details, list, icons), size, and areas to be shown or hidden (menu bar, tool bar, address bar, navigation bar, status bar).

This area also contains “**Sort by**” submenu, that allows setting / inverting sorting column (column’s header is not available when the browser is in List or Icons mode), “**Select all**” (Ctrl+A) and “Select...” (**advanced selection dialog**).

Open with/as

In the third area **Open as archive** forces opening the selected file as an archive type, if it is possible to find a suitable backend to handle its structure.

Open in a new tab shows tab bar (if hidden) and browse / open as archive the selected item in a new tab.

In “**Open with...**” submenu it is possible to run selected files and folders (in filesystem as well inside archives) with preferred programs, scan with antivirus/antimalware etc; applications can be set in Options > Settings > Open with... which is reachable also from this menu.

Hint: in Settings > Applications it is possible to define a sets of up to 16 simple and 8 advanced (more flexible syntax) custom application or scripts (i.e. editors, players, antivirus/antimalware etc) to be used to open files and folders bypassing the default system’s file associations; by default PeaZip tries to find some of most common applications.

Security related applications like virus scanners are conventionally placed in the second area (advanced) when automatically detected by PeaZip.

While browsing an archive, “**Open with...**” submenu is replaced by “**Extract and open with...**” and “**Preview with...**” submenus; preview functions will extract selected objects to a temporary folder rather than to the output path, and then take the programmed action on the output.

Hint: if the archive is in a read only path, preview functions will transparently switch to user’s temporary folder, while extract here functions will warn the user and ask to select a writeable output path.

Double-clicking an object (while browsing the filesystem) triggers “open with associated application” action, while browsing an archive double-click triggers “preview with associated application” action.

When performing any of those actions while browsing archives, the selected object will be extracted without replicating the directory structure in the archive.

If replicating the archive structure is desired, uncheck “Always ignore paths for Extract and...” option (see “Settings” chapter). If the object is a directory paths will not be ignored, this condition overrides all other switches.

File Management

The fourth area contains **file management** features

“**System tools**” collects system’s disk utilities (clean, defrag, manage, remove), system management tools (control panel, computer management, task manager) and display environment variables (both for Linux and Windows).

“**File Tools**” contains features to find duplicates, calculate checksums and hashes and more, see File Tools section in this chapter for more information.

“**File manager**” submenu allows to create new folder, rename (F2 or Ctrl+R), **advanced rename** set of functions (lowercase, uppercase, add, delete, or replace string in file name, change file extension), move to Recycle Bin, quick delete, zero delete or secure delete, zero or secure delete free disk space, copy or move files (using robust file copy/move with system’s **robocopy**, or xcopy on pre-Vista systems), open command prompt in the selected path.

Cut, copy and paste operations can also be performed with keyboard shortcuts of Ctrl+X, Ctrl+C and Ctrl+V respectively.

Pressing Ctrl+V while browsing an archive adds objects from clipboard to the archive; in this case objects will not be removed from the filesystem even if Ctrl+X was used, since PeaZip tries to not automatize potentially dangerous operations such file deletion, letting that kind of decision under the full control of the user.

Quick delete performs the fast deletion of selected objects, without needing to move them to recycle bin, **zero delete** and **secure delete** (only in the filesystem, not available in archives) performs a more secure file deletion as described in “File tools” chapter.

While browsing archives filesystem related functions (including cut, copy, paste) are disabled and the area shows only simple deletion from archive, if this action is supported for the current archive type.

“**Image manager**” allows to rotate, crop or resize graphic file types (JPEG, PNG, BMP, TIFF etc).

The area also contains **Web search**, **Explore path** to open system’s file manager in the selected path, to quickly switching working with PeaZip and standard system’s file manager, and **Properties**, starting a standard system’s dialog for displaying properties of selected files/folders.

Rightclicking **columns header**, while file browser is in details mode, shows a special context menu allowing to

- set visible columns
- adjust columns to default sizes
- save the list of displayed files as text file (tab-separated TXT including all columns of the file browser)
- copy to clipboard current path, or paths of selected items
- perform on the fly **search of duplicate files** or **checksum/hash calculation** without leaving the file browser UI (result is displayed in Checksum/hash column, on the right) - the algorithm for both functions can be set from Algorithm submenu - see File Tools chapter for more information.

Please note those two functions are only available when browsing the filesystem, as checksum/hash values of files inside archives are pre-computed during the archive creation (usually CRC32 is the standard, optionally RAR5 can use BLAKE2 hash). Computing a different checksum/hash for each single input file (if simply checksum/hash verification of the whole archive is not fit for the purpose) needs to be done before or after archiving - in example, calculate any desired hash for input files, save the report as TXT and add the file to the archive.

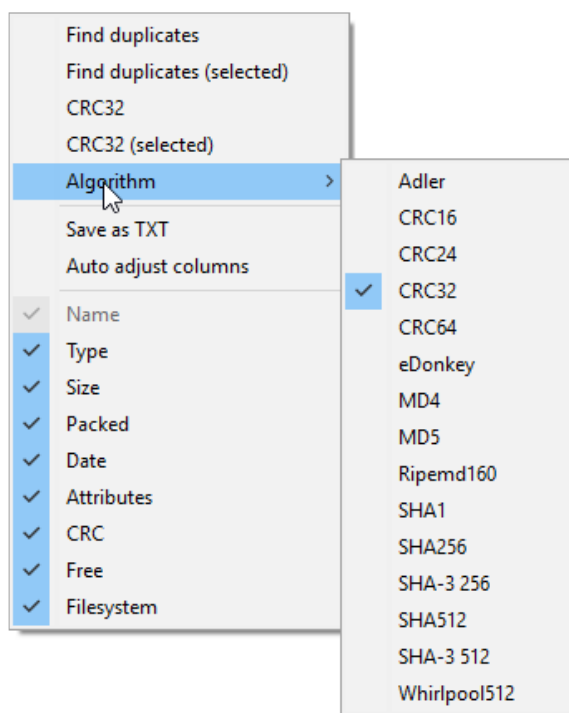


Image 10b: Headers’ context menu

File manager's keyboard shortcuts and mouse controls

File/archive browser supports following keyboard shortcuts; some functions are format-specific and will be ignored if not supported for the current archive type.

Functional keys:

F1	brief translated help instructions / Alt+F1 help file (pdf)
F2	rename file(s) / Ctrl+F2 copy selected to / Shift+F2 move selected to
F3	search (recursivity option is remembered) / Ctrl+F3 start as non recursive (search here) / Shift+F3 recursive / Alt+F3 system search
F4	show navigation menu / Ctrl+Shift+F4 browse root / Ctrl+F4 browse desktop / Shift+F4 browse home
F5	refresh / Shift+F5 add selected to archive / Ctrl+F5 extract selected / Alt+F5 extract archive (opens selection dialog)
F6	toggle browse/flat view
F7	add to bookmarks / Ctrl+F7 open in a new instance of PeaZip / Shift+F7 open command prompt in selected path / Alt+F7 explore selected path
F8	browse first item in bookmarks list (Ctrl, second, Shift, third)
F9	set password/keyfile / Shift+F9 password manager / Ctrl+F9 create keyfile or random password / Ctrl+Shift+F9 set advanced filters
F10	menu / Ctrl+F10 run as different user / Alt+F10 run as administrator (Windows Vista and newer systems)
F11	toggle full screen mode / Ctrl + F11 immersive (full screen, no window border and controls)
F12	extract all to...

Basic operations

Open as archive	Ctrl+O
Extract/ Extract selected	Ctrl+E

Extract without confirmation (from file browser):

Extract all to... (open selection dialog)	Ctrl+Alt+E
Extract all here	Ctrl+Alt+Shift+E
Extract all to Desktop	Ctrl+ Alt +D
Extract all to Documents	Ctrl+Alt+Shift+D
Extract to previous output path (if set)	Ctrl+O
Extract to path of 1..8' favourite (if set)	Ctrl+1..8
Extract to default path (if set)	Ctrl+9

While browsing an archive:

Extract displayed content	Ctrl+S
Extract all content	Ctrl+L
Test all (when browsing an archive)	Ctrl+T
Extract and open with PeaZip	Ctrl+Shift+Z
Extract and open with default application	Ctrl+Shift+O
Extract and open with ...	Ctrl+Shift+W
Preview functions	same as previous ones, using Ctrl+Alt+Z/O/W
Preview selected	Enter or doubleclick
Properties	Alt+Enter

File Tools (when browsing the filesystem):

Compare selected object with...	=
Checksum and hash of selected objects	?

Navigation:

Select all	Ctrl+A
Toggle browse mode / flat view mode	* or F6
Display/organize Bookmarks	Ctrl+D
Display History	Ctrl+H
Display Session history	Ctrl+Alt+H
Go to computer's or archive's root	Ctrl+Shift+F4
Search	F3 / Ctrl+F3 non recursive / Shift+F3 recursive / Alt+F3 system search
Add to bookmarks	F7
Browse first item in bookmarks list	F8
Open directory/archive	< or Enter or doubleclick on the folder/archive
Up one level	> or click on blue back arrow icon or Alt+Up

Go to object's path	Ctrl+P (useful in flat view and search/filter mode)
Go back in history	Ctrl+B or Backspace or Alt+Left
Forward in history	Ctrl+F or Alt+Right

Bars

Highlight menu bar	Alt
Swap tool bar and navigation bar	Alt+0
Hide/show menu bar	Alt+1
Toggle Tool bar	Alt+2
Hide/show address bar	Alt+3
Toggle navigation bar	Alt+4
Toggle sort column	Alt+5 (*)
Toggle browser's presets (common styles and sizes)	Alt+6
Toggle status bar view	Alt+8 (**)
Set pre-defined actions/scripts for "Open with"	Alt+9

Sort Column (*)

Name	Ctrl+Alt+1
Type	Ctrl+Alt+2
Size	Ctrl+Alt+3
Packed Size	Ctrl+Alt+4
Date/Time	Ctrl+Alt+5
Attributes	Ctrl+Alt+6
CRC	Ctrl+Alt+7

Views (**)

None, hide "Views" panel	Shift+Alt+0
Status bar: basic information, navigation and password icons	Shift+Alt+1
Details, replicate and extend status bar's functions	Shift+Alt+2
Bookmarks, organize favourite files, folders and search filters	Shift+Alt+3
History, latest folders and archives	Shift+Alt+4
Clipboard, objects currently scheduled for copy or move operations	Shift+Alt+5

Modify:

Recycle bin / Delete form archive	Del
Quick delete	Shift+Del
Zero delete	Alt+Del
Secure delete	Ctrl+Del
Refresh	F5 or icon in first column of titles' bar
Create new folder	Shift+Ctrl+N
Rename	Ctrl+R or F2
Cut	Ctrl+X
Copy	Ctrl+C
Paste	Ctrl+V
Cancel current selection and clear clipboard	Esc

File manager's mouse controls

DoubleClick: preview selected object with associated application

Rightclick: activate file/archive browser's context menu

Enter password (F9)

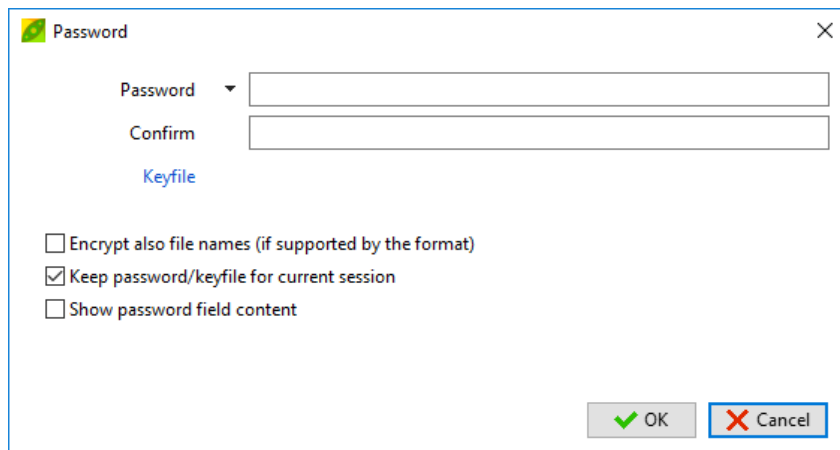


Image 11: enter password (and optional keyfile) prompt

Password form allows to set password and, optionally, a keyfile for two factor authentication.

Once a password is entered, it is used by:

- file manager, since some encrypted archives needs password for being browsed or tested
- archive extraction, to open encrypted archives
- archive creation, to create encrypted archive (if the selected format supports encryption); in archive creation interface it is specified if the password is set and if encryption is supported for selected archive format.

Two factor authentication is not applied to sfx archives; as self extracting modules are able to check for password only the keyfile field is ignored when compressing to self executable archives in order to not break compatibility.

If a keyfile is set for any other format than PEA (which has its own way to use keyfile) the SHA256 hash of the file encoded in Base64 (RFC 4648) will be prepended to the password. This convention allows any other file archiver to work on two-factor authentication archives built with PeaZip, even if keyfile parsing is not supported (or has different scheme) simply passing the Base64-encoded SHA256 hash of the keyfile as the first part of the password.

“Encrypt also filenames” option is used during creation of 7Z and ARC formats: if checked, the encrypted archive will need password for being browsed, else the content will be visible; in both cases extraction will require the password.

The padlock icon in file browser’s status bar (also shown in archiving and extraction interfaces) will change to visually inform that a password is set.

On the bottom of password form, a bar will express colour code evaluation of password strength, red means the password is inadequate, yellow hints a weak password, green means the password strength is ok, dark green stands for strong passwords.

Please note however that a good password must be in first place not easy to connect with the user through social engineering, that is a far more efficient attack than brute force or dictionary based attacks, and in second place, it is recommended to avoid dictionary attacks not using common words or quotes as password.

On the left of Password field there is a drop down menu showing passwords saved in the Password manager, and a link to access to the Password manager (also featured in main menu, Tools > Password manager).

The list of password is empty if no password is saved or if the password manager is password protected and user has not authenticated (see next chapter).

Password options

In the bottom area of the form are listed password options.

“Encrypt also filenames” option increases security for file formats (7Z, ARC) supporting this feature. If filenames are not encrypted, an unauthorized attacker may open the archive and get an idea of the content, even not being able to decrypt and extract it, which may be unwanted in many scenarios.

With “Keep password for current session” flag (default), password and keyfile are kept until changed or until PeaZip is closed; multiple instances of PeaZip can keep different passwords. Otherwise, password and keyfile are automatically reset each time a new archive is browsed.

“Show password field” content makes the password field visible, making easier to enter password and not requiring retyping it for verification. However, this way the password is also easier to read for unauthorized bystanders.

Password manager (Shift+F9)

Password manager is accessible from main menu, Tools > Password manager or from Password form, from drop down menu on the left of Password field.

To insert or edit password and notes, and for other options, rightclick on the password list area, or click the menu icon on the right of the tab bar, to show the password list context menu.

Password list, contains passwords and notes (but can be used to store any kind of information as string, i.e. a keyfile name if desired), that can be copied and pasted to any application – passwords will also be displayed in the dropdown menu in Password form.

Items in password list can be dragged (from first column) to be sorted; rightclick on the password list to options menu (add and remove items, reset, export...), doubleclick to edit an element, use Ctrl+C to copy a string.

Set/change master password

If no password is set the password manager will be accessible without prompting for authentication, otherwise password list tab (and passwords in dropdown menu in Password form) will not be displayed until the user correctly authenticates, accessing to the password manager providing correct master password/keyfile.

The Password manager is protected by authenticated encryption (AES256 in EAX mode), and saved as encrypted file “pm” in PeaZip’s configuration folder, if the file is corrupted or tampered the user will be asked if trying to recover it or to delete it.

Passwords can be exported as plain text (not recommended) or in its encrypted form, in this way a password list's .bak file can be manually imported as password manager file, renaming it as pm (no extension) and copying it to PeaZip's configuration path (linked in Options > Settings): this file will have the same content and password it had when it was originally saved.

This mechanism allows in example to roll back to a previous password list, or maintain various off line password lists, or exchange protected password lists with other users or other machines

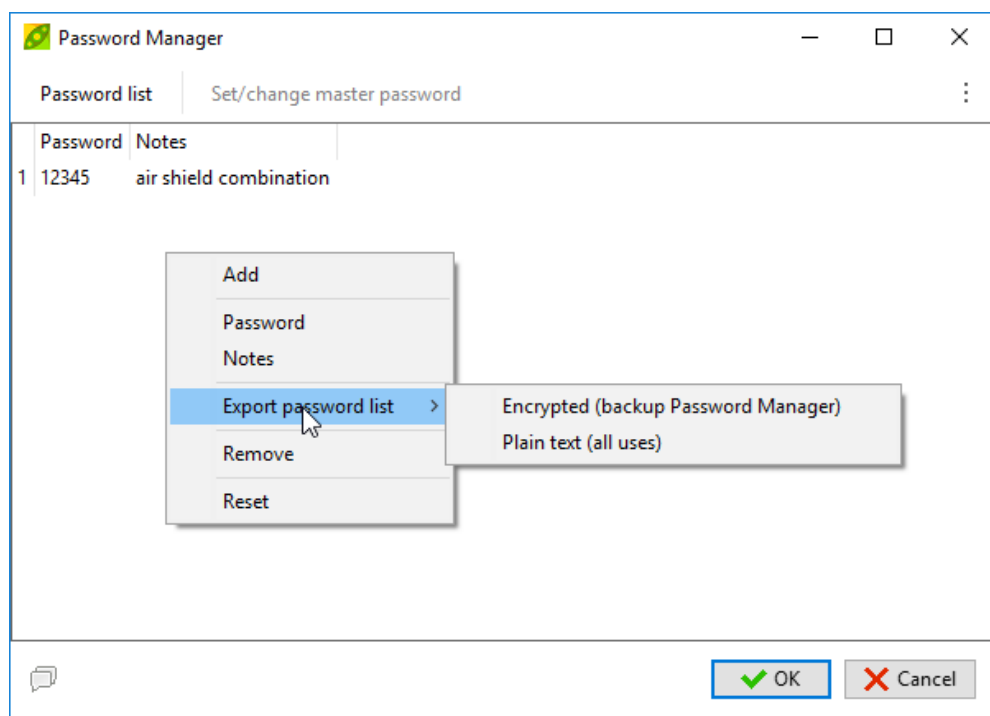


Image 12: Password manager’s Password list tab, showing context menu

Create keyfile (Ctrl+F9)

For higher security against dictionary and some social engineering attacks, a **keyfile** can be used along with the passphrase to key the encryption.

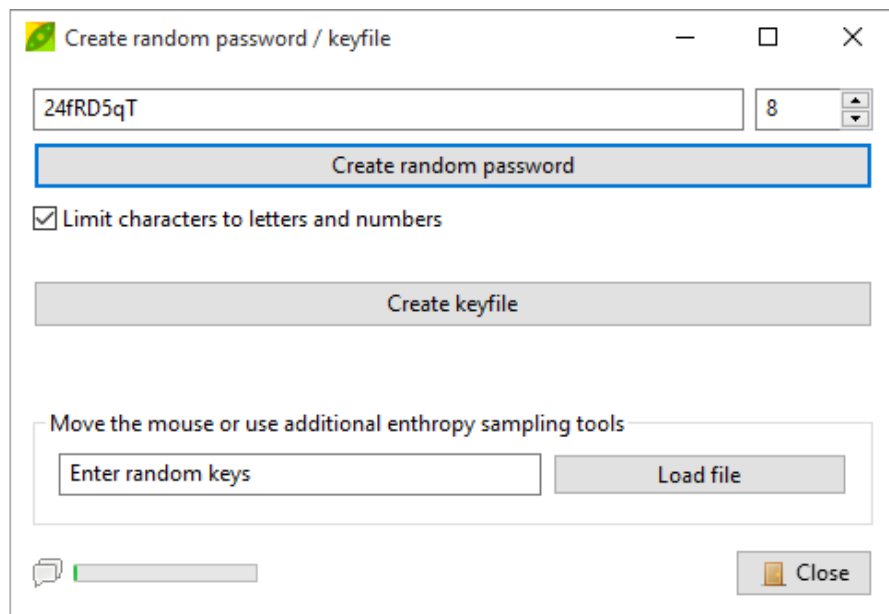


Image 13: keyfile generation utility

The keyfile need to be securely managed since its content need to remain secret as well as the passphrase; any file can be used as a key, but it's strongly recommended to use a randomly generated file.

If a keyfile is used for a non-PEA archive, the SHA256 hash of the file (no size limit) encoded in Base64 (RFC 4648) will be prepended to the password, then it will be possible to work on archives encrypted with a keyfile using PeaZip or any application following the same convention, or simply entering the Base64-encoded hash as the first part of the password.

PeaZip can **create a random keyfile** sampling different entropy sources and submitting entropy collected to a robust random number generation routine, in the same interface it's also possible to generate a 4-64 character **random password**; the password will contain mixed case base characters and digits only, in order to be typeable on any keyboard layout and to be accepted by almost all applications or online password forms.

The passwords and keyfiles generated in that way can be used not only in PeaZip but also in any other application requiring a strong password or a random keyfile.

This utility uses functions provided by pea's libraries so refer to Pea documentation for any detail about random number generation and entropy collection in PeaZip project.

Set advanced filters (Ctrl+Shift+F9)

“Advanced filters” form allows to use multiple inclusion and exclusion criteria, one per line (optionally recursive with “Recurse subdirs” options), and can be applied to archive formats supported through 7z and FreeArc backends.

The filters can be applied to archive’s navigation, extraction and creation.

Exclusion filters prevail on inclusion filters.

Advanced filters bypass the archive browser’s basic search filter (in mentioned archive types) so address bar is disabled, while browsing archives which supports advanced filters, if “Use advanced filters” option is checked.

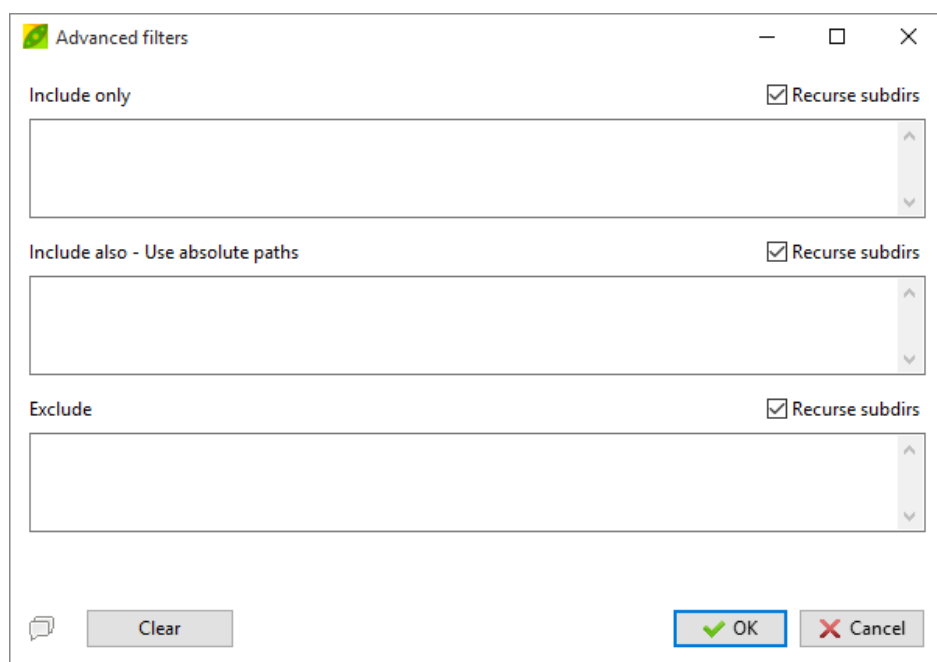
In archive creation (Add or Convert) screen are available “**Include only**” field, to apply inclusion filter to input directories (files individually added are always archived), and “**Include also**” to freely specify extra items/filters to be added to archive – i.e. enter a string containing an extra input (absolute) path and *.extension, to add all files matching chosen extension from the specified input path.

Multiple filters, one per line, can be written in the inclusion and exclusion fields; string delimiters (“ on Windows and ‘ on Linux and other *x systems) are not needed to be explicitly entered by the user. In example, if the user needs to extract (or display) only “myfile.txt” plus all files named “your file” and all .mp3 files, but not .mp3 starting with a and m, could write in the inclusion field:

```
myfile.txt
your file.*
*.mp3
```

and in the exclusion field:

```
a*.mp3
m*.mp3
```



The screenshot shows a window titled "Advanced filters" with three main sections for defining filters. Each section has a text input field and a "Recurse subdirs" checkbox. The sections are:

- Include only:** A text input field and a checked "Recurse subdirs" checkbox.
- Include also - Use absolute paths:** A text input field and a checked "Recurse subdirs" checkbox.
- Exclude:** A text input field and a checked "Recurse subdirs" checkbox.

At the bottom of the dialog, there are three buttons: "Clear", "OK" (highlighted with a blue border), and "Cancel".

Image 14: inclusion and exclusion filters. “Include also” field is featured only for archive creation/conversion, not featured for archive browsing and extraction.

To exclude **directories**, use the syntax `dirname*\` which excludes all objects contained in the directory named “dirname”.

To exclude **subdirectories**, the filter in previous example can be modified as `dirname*\subfoldername*` to exclude all items inside “subfoldername” which is inside “dirname”.

Both absolute and relative paths can be used.

Advanced filters can be set from main menu, which shows the entry checked if advanced filters are in use, and from checkboxes in archive and extraction interfaces.

Please refer to original 7z and FreeArc documentation about inclusion and exclusion filters to understand how they works to get best result from this very flexible tool.

File tools

PeaZip collect also handy file management utilities

In file manager submenu:

Quick delete removes files and folders from the filesystem without moving them to the recycle bin as in standard deletion operation (featured in the same group), so the operation is quicker and not recoverable unless specific data recovery software is used.

Zero delete overwrites file content with all zero and remove files and folders from the filesystem without moving to the recycle bin. **Zero delete free space** overwrites free space of a specified drive with all zero; zero deletion is marginally more secure than quick deletion with some data recovery software, anyway it is primarily meant to improve compressibility of the whole filesystem, in example when optimizing virtual machine disk images or backup disk images. Please note overwriting large volumes is time consuming, and may quickly wear flash based disks.

Secure delete is intended for securely remove files and folders from disk, avoiding possible data recovery; it provides multiple overwriting of file with random data stream (AES256 CTR) forcing flush to disk each iteration, then replacement of content with randomly sized random data to mask original file size, and multiple renaming with random string to mask original file or folder name.

Secure delete free space overwrites free space of a specified drive with random data stream (AES256 CTR) multiple times, forcing flush to disk each iteration. Please note overwriting large volumes multiple times is time consuming, and may quickly wear flash based disks.

In "Settings > File Tools" it is possible to set number of passes to perform (1 VERY_FAST, 2 FAST, 4 MEDIUM, 8 SLOW, 16 VERY_SLOW) over the data for Secure delete and Secure delete free space.

Notes about secure file deletion: please use this function carefully since securely deleted data usually will not be recoverable.

Please note that secure file deletion doesn't overcome any known risk of data leakage, i.e. it may exist copies of the data as temporary files saved by other applications, or as not securely deleted older versions of the file, or cached by the system: wiping a file cannot affect that orphaned data, which may be recovered with software utilities or specific hardware probes.

Moreover, flash based storage usually re-allocates sectors for writing transparently for the software, in order to reduce unit's wear since flash units have a shorter lifespan in terms of writes; this doesn't allow to efficiently physically overwrite original content, reducing the efficiency of file wiping; in those cases wiping the whole disk would be more effective, but (for flash based disks) it will lead to fast wear and reduced lifespan of devices.

Notes about secure free space deletion: please note that efficiency of software based free space deletion can be limited by underlying factors, i.e. disk areas locked or made not available from the operating system, or disk drivers, or even at lower level (BIOS/UEFI or disk logic).

Note about zero deletion and zero free space deletion: with standard deletion, data is removed from the filesystem's table of content, but remains on disk (that's why overwriting data is necessary for secure deletion).

When compressing a filesystem, i.e. a backup disk image, or optimizing a virtual machine disk, all actual data in the filesystem must be handled so having files deleted with standard deletion does not reduce the amount of data the disk image contains.

Using secure deletion may worsen the problem, as the random data written to disk to overwrite original data is not compressible.

Zero deletion mode offers a solution in this scenario, as the data is overwritten with a regular pattern that can be compressed to extremely high ratios, effectively reducing this overhead.

In File tools submenu:

Analyze files and folders: recursively lists content of selected files/folders

Shows file properties, modification time, and size. For directory, size and content is shown, helping in identifying possible duplicates folders. Shows total number of files and folders, space occupation, estimation of compressibility, older and newer object's date/time and larger / smaller object's sizes.

Check files can perform in a single pass multiple user selected hash and checksum on multiple files at once. In Tools > Settings > File Tools it is possible to select algorithms to be performed over the input files (also available in archiving / extraction interfaces).

Compare files performs byte to byte comparison between two files; unlike checksum or hash based comparison byte to byte comparison can spot exactly what are the different bytes and it is not susceptible of collisions under any circumstance, even if this condition is highly improbable and very difficult or not practically possible to trigger if a proper hash function is chosen (also available in archiving / extraction interfaces).

Hexadecimal preview: a very basic tool to view the content of a file represented as hexadecimal values (also available in archiving / extraction interfaces).

Shows offset, hexadecimal representation of bytes, and possible utf-8 translation of each string of 16 bytes per row.

At current level of implementation please note that (1) not all rows could be correctly represented in the GUI as utf-8 strings, but they will be correctly written to file using save report feature (2) the implementation is limited to small files (< 16MB).

In columns header's context menu (when in details mode, and while browsing the filesystem - not archives)

Find duplicates is a fast routine to find duplicate files displaying the report directly in the file browser. This utility can be combined with all file browser's features, like F6 to display subfolder's content, or F3 to apply a search filter (recursive by default), for all displayed or only selected items. Only true duplicates are reported, with same size and same binary content.

CRC32 / CRC32 (selected) calculate the checksum or hash for all items displayed in the file browser (or selected items), using the same control algorithms set for the duplicate finder. This is useful to check files for corruption or substitution when an original checksum or hash value is known.

Control algorithm used in the two previous functions can be selected from "Algorithm" submenu (or in Settings > File Tools > Browser) from a wide array of 15 algorithms: Adler32, CRC16/24/32/64, eDonkey, MD4, MD5, Ripemd160, SHA1, SHA256/512, SHA-3 256/512, Whirlpool512.

Ripemd, SHA, SHA-2, SHA-3 and Whirlpool algorithms are cryptographically strong, and suited to detect malicious modifications that might have been introduced to pass undetected by simpler control algorithms.

Extract archives

This interface is activated when one or more archives (even of mixed formats) are selected for extraction from file manager, or when browsing an archive the whole content or part of it is selected for extraction; the main application's menu is enabled (except for Browser submenu).

The form is organized in 4 tabs: **Extract**, containing most frequently used controls, is shown by default, **Advanced** (more fine grained options), **Console** (transform the task defined in the GUI into a command line, that can be saved as script for later usage, inspection, further customization, learning purpose, etc), and **Schedule**. On the right of the tab bar, the menu icon shows entries to add/remove objects from the input layout, and display other input-related functions; the same menu is available as context menu right-clicking the input area.

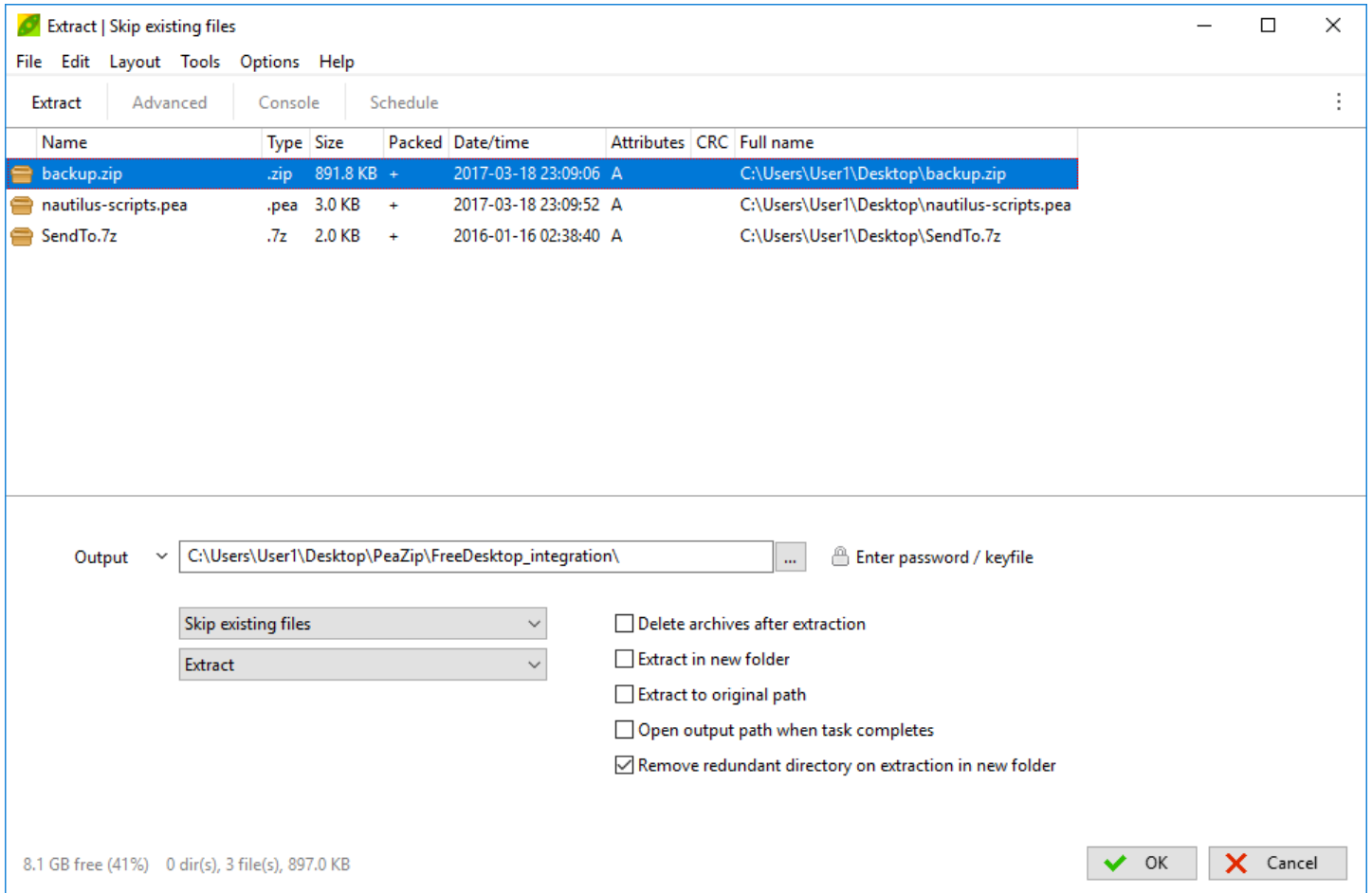


Image 15: Extraction interface: rightclick the input area, or click the menu icon on the top right of the application, to display the context menu to add/remove objects from extraction layout, and display other related functions.

Click on the dropdown menu's arrow on the left of Output path for quick selection in system's paths, favourites, and recently opened directories.

It is possible to skip this confirmation interface extracting archives directly from the system using "Extract here" or "Extract here (in new folder)" context menu entries.

It is also possible to skip confirmation interface and to extract directly from PeaZip's file/archive browser, in example:

- open the archive and drag desired files and folders to the desired output location on your system, or drag with right mouse button (or pressing Ctrl) for a contextual menu to choose if to extract all or only selected items, and to extract into a new folder or not
- open the archive, rightclick on an item and select "Extract and open with..." to perform both the two operations on the item with a single click
- Click "Extract all to..." button (shortcut: Ctrl+E or F12), or select a quick extraction destination from the dropdown menu on its right; other shortcuts:
 - Ctrl+Alt+E extracts archive in its current folder
 - Ctrl+Shift+E extracts to desktop
 - Ctrl+Alt+Shift+E extracts to user's documents
 - Ctrl+0 extracts to the previous output path
 - Ctrl+1..8 extracts to 1..8 favourite's path (if defined)
 - Ctrl+9 extracts to default output path (if defined)

The aforementioned keyboard shortcuts are available both from the file manager and the archive extraction interface, to directly start extraction bypassing the confirmation dialog.

Extract

This is the main screen for extraction tasks, containing most commonly used parameters and **Ok** and **Cancel** button to confirm start or to discard the current operation.

Clicking Ok saves modifications to extraction options, while Cancel discards the modifications; it is also possible to confirm changes with an empty layout in order to modify PeaZip's behaviour without the need to start a task.

Options will not be saved if forcedly modified entering a special operation mode, i.e. when using system's context menu entries "Extract here" or "Extract here (in new folder)".

Hint: remember that for simply changing extraction options, it is possible to click on "Extract" button with no input selected (empty layout), modify options and save with OK button

In the top area of the tab is shown the **Input** area, where are listed the archives that are going to be extracted (**extraction layout**), with the total number of archives and total size; additional archives can be dragged here to be added to the list.

Objects in the archive layout can be sorted by name, full name, size, extension, type, attributes etc, clicking on titles in archive layout's title bar.

If extracting from inside an archive, the layout will display items listed to be extracted from the archive, and will not accept modifications from drag and drop or context menu, and it will be available "**Extract all**" link below the input list to turn a partial extraction in extraction of the entire archive if desired.

Rightclicking on the input list shows the **contextual menu**, which features functions to add archives to extraction layout (add files, load layout), and other related functions.

Files can be simply dragged from the system to the application: to help file selection "Search and drag here" opens a standard system's search prompt, and "Path" submenu links system's file explorer to paths of bookmarked and recent items; "File" submenu directly adds recent or bookmarked archives to current layout.

The layout can be saved to a UTF-8 text file (for maximum flexibility of use); when a layout is loaded each object is checked (must exist, duplicates are skipped).

From the context menu it is also possible to remove objects from the archive's layout ("Remove selected objects" and "Clear layout") and to explore selected object's path.

"Go to file browser" can be used to return to file browsing without discarding the current list of archives, in example to navigate and search for other archives to be added to the list from file browser interface.

"Open with..." submenu of context menu allows opening the selected object with PeaZip, associated application, or a custom applications.

"File Tools" submenu allows quick access to some of PeaZip functions to be applied on selected objects (see "File tools" chapter).

In the bottom area of the form is featured **Output** group, that allows to select output directory; on the left of the address box, the arrow button popup a navigation menu similar to the one featured in file manager, to speed up the selection of most used paths.

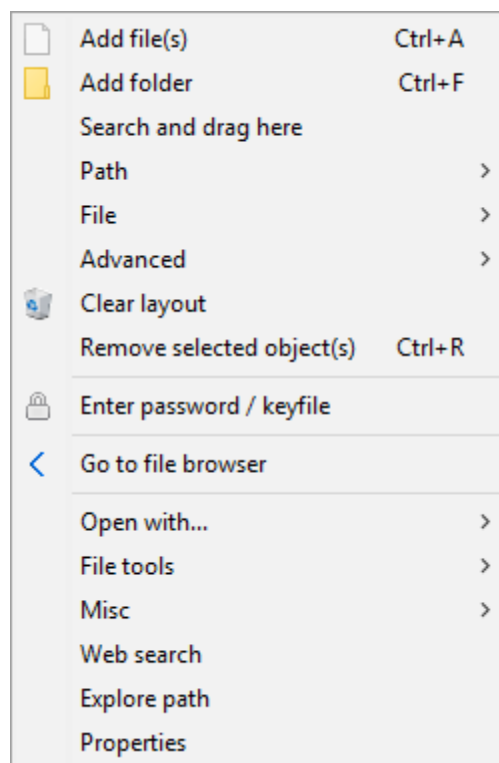
The extraction's navigation menu is organized in **Bookmarks**, **Filesystem** and **Recent** submenus, containing only directory entries. The menu also features "Use default output path" entry to select an output path to be used by default in place of archive's path, useful if the user often extracts to the same path.

When this feature is active, the "Use default output path" entry is flagged, and can be clicked again to remove the flag and deactivate the option.

On the right of Output field it is featured **Enter password / keyfile button** to set the decryption password, if needed for extraction of encrypted archives.

If password is not set, the padlock icon of this button is greyed, otherwise the icon is displayed with normal colours and the bottom of the form will be highlighted with a colour representing the strength (automatically evaluated entropy) of the password, red for easy password, green for more secure ones.

Dropdown menus (on the bottom left of output area) features output options for 7z backend, that is used to support most common file formats ("Advanced" tab contains parameters for other backend executables).



- Possible actions performed by the extraction routine:
 - “Extract” extracts archived objects with paths, replicating the directory structure of the input data;
 - “Extract (without path)” will extract all archived files to the same path;
 - “List” will show archive’s content;
 - “List (with details)” will give a more detailed report on archive’s content, the same given by “Info” entries in context menu. List functions will always be performed in pipe mode (even if 7z option is set to “console mode”), using graphical wrapper in order to make easier reading and saving the report.
 - “Test” will perform type specific tests to prove or disprove archive’s integrity.
- What the extraction routine will do in case of naming conflict while extracting data. Anyway, using “Extract in new folder” switch will assure avoiding naming conflict.
 - “Skip existing files” assure that pre-existing objects are not touched by the extraction operation, being the conflicting objects not extracted from the archive (default).
 - “Auto rename extracted files” assign a new unique name to objects being extracted from the archive each time a naming conflict is encountered; that policy assures that pre-existing objects will keep their names and new ones will get new unique names.
 - “Auto rename existing files” assures that extracted objects get the desired name while pre-existing objects are renamed with a new unique name.
 - “Overwrite existing files” make all pre-existing objects overwritten by extracted objects.
 - “Ask before overwriting (in console)”: no defined policy, the console will be shown alongside graphic process launcher allowing the user to decide interactively if overwriting or skipping files.

Checkboxes (on the bottom right of output area), can set following options:

Delete archives after extraction removes original archives after extraction process, the user is asked for confirmation before proceeding with deletion. If this option is in use, a dropdown menu on the right of the checkbox allows to set the type of deletion to be performed: move to recycle bin, quick delete (files are deleted without being moved to recycle bin), zero delete (files are overwritten by 0s, useful to optimize compressibility of disk images, if the host system is a virtual machine), secure delete (multiple pass overwriting of data).

Extract in new folder checkbox, when checked, triggers extraction to a fresh new folder, avoiding possible naming conflict and unwanted “tarbomb” effect (when an unexpectedly large number of files is extracted in current path getting mixed with existing files).

Extract to original path option can be used when multiple archives from different paths are listed for extraction, in order to perform extraction of each archive in its original input path.

Open output path when task completes automatically open the output directory where the archive was extracted to.

Remove redundant directory on extraction in new folder moves extracted content up one folder if unnecessary level of nesting is detected after “Extract to new folder” operations.

The status bar contains, on the left, information of free space on current output disk, and input size, and on the right OK and Cancel buttons.

Cancelling an operation also means discarding changes in option switches, while confirming with OK saves changes.

Advanced

“**Use advanced filters**” checkbox shows if advanced filters are set or not; clicking the unchecked box will show the advanced filter’s form to set inclusion/exclusion filters, clicking the checked box will deactivate advanced filters.

Halt system when task completes checkbox schedule shutting down the system when extraction operation is completed.

Extract supported non-archive types checkbox, unchecked by default, allows some non-archive types like executables, MS Office and Open Office documents etc to be treated as archives, in order to be disassembled.

In file manager those file types are displayed with special icons to show they can be accessed as archives by PeaZip, but will not be treated as archives by default.

Extract unsupported file types checkbox, unchecked by default, allows any arbitrary type of file to be treated as an archive by PeaZip, providing the user can specify a custom executable backend to handle the file type in “**Custom parameters**” group, which is enabled if this option is checked.

This screen also allows to set parameters for backend executables 7Z / p7zip, FreeARC and ACE.

7Z / p7zip group allows to set (for current session) extraction to **relative paths** (default), or to **full / absolute paths**.

In this way it is possible to extract content directly to intended locations (absolute path includes drive letter in Windows), if the input archive was created archiving original items keeping full / absolute paths information.

Also, for WIM (Windows Imaging Format) files it is possible to set to include or exclude NT security information and NTFS Alternate Data Streams in extract, list, and test operations - if such data was saved in the image file.

Notably, in this group it is possible to change action for **FreeArc** backend to "Repair", which (for ARC archives only) verifies integrity and tries to repair the archive(s) using the recovery records that may have been included at the archive creation.

Console, Schedule

Console screen allow to export the task defined in the GUI as a script, that can be interactively edited, tested and saved.

Schedule screen allows a simplified one pass UI to save the task definition and schedule it in Windows' system task scheduler (Vista and newer systems).

For more information, see "Save and schedule tasks" chapter.

Note about extraction

The default operation is extracting recreating the full parent path's directory tree, as saved in the archive, in the extraction destination path.

This may be necessary to preserve the functionalities of reciprocal links of archived objects, i.e. link files, hypertexts, scripts, programs, databases etc...

In extraction confirmation interface it is possible to override this behaviour selecting "Extract (without paths)" in extraction option: this option will flatten the extracted content to a single directory, all information about the original directory tree (both up and below the directory of the selected items) will not be preserved.

In Options > Settings, Open archive tab, are featured "Always ignore paths..." directives, in order to extract items from the archive in a flat mode without recreating the directory tree, as with "Extract (without paths)".

These directives can be fine tuned for each special extraction mode: for drag and drop operations, for extract and open with, and for extract selected or displayed objects (all objects shown with current browsing or search filter).

Unlike "Extract (without paths)", "Always ignore paths..." directives are overridden if one of the selected objects is a directory, this because flat extraction will lose information about directory tree so it is considered unfit for directories, and will be applied only if files are selected. The same rule applies when extracting objects from archives browsed in flat mode, consistently with behaviour of mainstream archive utilities.

To apply flat extraction to a directory, rightclick, extract > extract selected objects, set "Extract (without paths)".

By default these directives are set on for "drag and drop" and "extract and open with" operations, so by default all partial extraction operations starting from file/archive browser interface behaves in the same way, trying to ignore re-creating paths, while by default all special operations starting from the extraction confirmation dialog (extract selected and displayed) will not.

Create / convert archives

This interface is activated when files and folders are selected for being added to an archive from file manager, or when, browsing an archive, it is requested to update it adding other files and folders. The main application's menu is enabled (except for Browser submenu).

The same interface is activated using for archive conversion, which activates by default "Convert existing archives" and "Add each object to a separate archive" options.

Clicking on dropdown menu in archive buttons group in file browser's toolbar it is possible to start creating/converting archives in a specific format chosen from the "Favourite formats" context menu.

The form is organized in 4 tabs: **Archive** creation, containing most frequently used controls, is shown by default, **Advanced options**, **Console**, and **Schedule**. On the right of the tab bar, the menu icon shows entries to add/remove objects from the input layout, and display other input-related functions; the same menu is available as context menu right-clicking the input area.

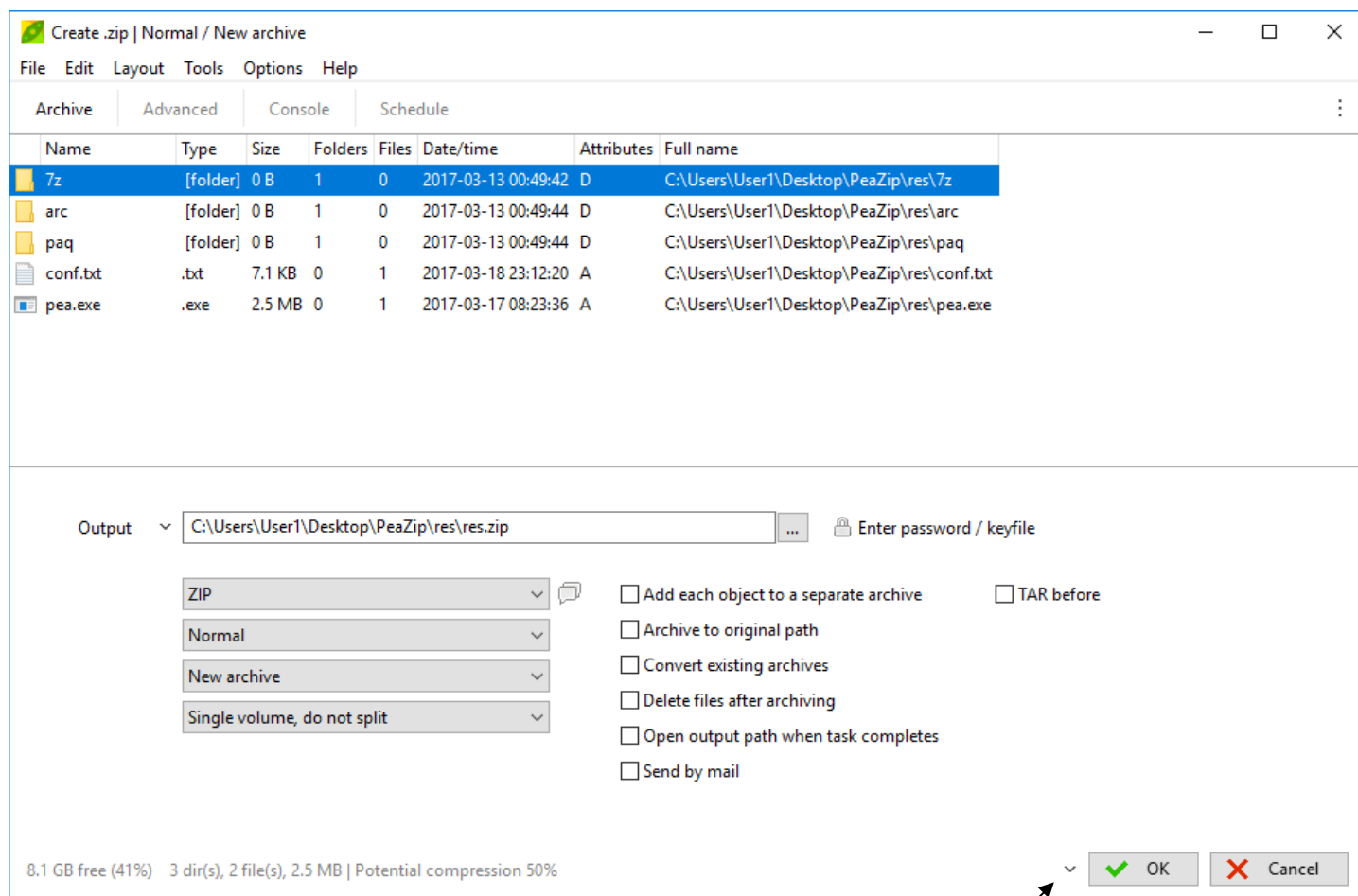


Image 16: "Create archive" interface.

Rightclick the input area, or click the menu icon on the right of tab bar, to display the context menu to add files and folders to archiving layout (add files, add folder, search and drag here, load layout), and display other related functions.

Click on the arrow on the left of the output address for quick selection of the output path in system's paths, favourites, and recently opened directories.

Click on the arrow on the left of OK button to directly compress/convert to the selected format.

Archive

This is the main screen for archive creation (or update) tasks, containing most commonly used parameters and **Ok** and **Cancel** button to confirm start or to discard the current operation.

Clicking Ok also saves modifications to archive creation options, while Cancel discards the modifications; it is also possible to confirm changes with an empty layout in order to modify PeaZip's behaviour without the need to start a task.

Options will not be saved if forcedly modified entering a special operation mode, i.e. adding files to an existing archives.

Please note that some options (like TAR before or conversion switches, or some advanced format options) are context dependent and will be reset in next task instances.

In the top area of the tab is featured the **Input** group, where are listed the items that are going to be archived (**archiving layout**), with the total number of files and folders and total size; additional files and folders can be dragged here to be added to the list.

Rightclicking on the input list shows the **context menu**, which features functions to add files and folders to archiving layout (add files and folders, load layout), and other related functions.

Files can be simply dragged from the system to the application: to help file selection “Search and drag here” opens a standard system’s search prompt, and “Path” submenu links system’s file explorer to paths of bookmarked and recent items.

The layout can be saved to a UTF-8 text file (for maximum flexibility of use); when a layout is loaded each object is checked (must exist, duplicates are skipped).

From the context menu it is also possible to remove objects from the archive’s layout (“Remove selected objects” and “Clear layout”) and to explore selected object’s path.

“Go to file browser” can be used to return to file browsing without discarding the current list of archives, in example to navigate and search for other files and folders to be added to the list from file browser interface.

“Open with...” submenu of context menu allows opening the selected object with PeaZip, associated application, or a custom applications.

“File Tools” submenu allows quick access to some PeaZip functions to be applied on selected objects (see “File tools” chapter).

Objects in the archive layout can be sorted by name, full name, size, extension, type, attributes etc, clicking on titles in archive layout’s title bar.

In the bottom area of the tab is featured **Output** group, that allows to select output directory and file name; on the left of the address box, the arrow button popup a navigation menu similar to the one featured in file manager, to speed up the selection of most used paths.

The archiving navigation menu is organized in **Filesystem**, **Bookmarks** and **Recent** submenus, containing only directory entries.

On the right of output field, it is featured **Encryption: enter password / keyfile** button, to set the **password** to create an encrypted archive, the button is only displayed if the selected archive format supports encryption.

From password popup it is possible to check/uncheck “Encrypt filenames” option, which, if supported by the selected archive format (7Z and ARC formats) does not allow to browse the content of the archive if the right password is not provided.

Format-specific encryption options (e.g algorithm) can be selected in Advanced tab.

If password is not set, the padlock icon of this button is greyed, otherwise the icon is displayed normally and the bottom of the form will be highlighted with a colour representing the strength (automatically evaluated entropy) of the password, red for easy password, green for more secure ones.

Output options dropdown menus on the bottom left area set the archive **Format** and **Compression level**, more options for each format can be fine-tuned in “Advanced” tab; last used compression options will be remembered to be used as default, avoiding the need to set it in advanced tab following times the format is used; resetting applications default resets also compression options.

The info icon in the right of the archive type selection combobox will display a brief explanation of the characteristics and features offered by the selected format.

“Function” dropdown set the policy when a pre-existing archive with the chosen name is found on the system:

- **New archive** (default) will force the creation of a new archive, with unique name;
- **Add** adds the input objects to the archive, if an archive with the chosen name exists, overwriting any matching files;
- **Update** add the input objects to the archive, overwriting only older matching files already in the archive;
- **Update only files already in archive** “freshen” the archive content: works as update, but ignoring (not adding) input files not already in the archive
- **Synchronize archive with disk** works as update, but archived files not featured in the input will be deleted from archive – warning: please note the files removed from the archive will not be recoverable

In the same group of controls it is possible to set **Volume size**, allow (optionally) splitting the resulting archive in volumes of given size, choosing between presets (from 1.44 MB FD to 8.5 GB DVD DL size) or freely composing a custom size.

This option is not supported by some formats (i.e. self extracting archives) and will be automatically overridden if not supported (the combo box will be greyed to be noticed by the user).

*Hint: to store large files/archives on **small supports**, or to respect **mail attachments size limitations**, it is recommended to split the output in volumes of desired size instead of spending more time for a deeper compression which is not always capable to reduce the output under the desired size.*

Options checkboxes on the bottom right:

Add each object to a separate archive send each item in the list to a separate archive.

In example, adding x folders to the archive list with this option checked will create x separate archives; if it is desired to add each file contained in a folder to a separate archive, instead, select the files in file manager and click “Add” to add them individually to the list.

Archive to original path option can be used when multiple files/folders from different paths are listed for archiving or conversion, in order to create each archive in the same path of each input item; flagging this option will consequently activate “Add each object to a separate archive” .

Convert existing archives extracts listed archives (not modifies non-archive files and folders) in order to recompress the original data from its uncompressed form, which can improve compression ratio.

Used with “Add each object to a separate archive” option (default, if “Convert” function was requested), it performs a mass conversion of each listed archive into the desired format, keeping them separated.

“Change password” option (default off) asks to provide a new password to be applied to converted archive(s), otherwise current - most recent, if any - password will be applied.

“Verbose” option asks for confirmation before proceeding with some steps, allowing further customization of the task:

- After the extraction stage it asks for confirmation to proceed with compression, this allows to abort the process in case of problems (disk full, unknown password, corrupted archives etc) or to further modify the extracted data before the compression.
- After the compression stage, it asks for confirmation before deleting temporary files and folders created for conversion, however original archives are not deleted and not modified in any stage of the conversion to let the user in control about keeping or removing them.

Delete files after archiving removes original files after archiving process, the user is asked for confirmation before proceeding with deletion. If this option is in use, a dropdown menu on the right of the checkbox allows to set the type of deletion to be performed: move to recycle bin, quick delete (files are deleted without being moved to recycle bin), zero delete (files are overwritten by 0s, useful to optimize compressibility of disk images, if the host system is a virtual machine), secure delete (multiple pass overwriting of data).

Open output path when task completes option (Shift+Ctrl+O) automatically opens the output directory where the archive was created in at the end of the process.

Send by mail (only for formats supported through 7z backend) attach the resulting archive to a new email message in the default mail client (if supported); it doesn't work with multi volume archives (the options is hidden if Volume size is not “Single volume”).

TAR before option allows to consolidate all input objects in a single TAR archive, temporarily saved in the output path, which will then (in a second pass) be compress/encrypt/split using the format specified in archive type combo box (after that second pass the temporary TAR archive will be deleted).

That option allows easily merging the advantages of TAR format (of mainstream and standard usage on most Unix systems) with features of other archive formats. It is especially useful as it allows to select compression-only formats (like gz, bz, quad) to compress archives of multiple objects (resulting i.e. in tar.gz or tar.bz or tar.quad) quite transparently for the user, but however it can be used in conjunction with any format (forming i.e tar.7z, tar.paq, tar.pea and so on).

The application will try to check if “TAR before” option is needed; however the user can check/uncheck this option anytime before launching the archiving process.

The status bar contains, on the left, information of free space on current output disk, input size, and estimated output size.

On the right are features OK and Cancel buttons: cancelling an operation also means discarding changes in option switches, while confirming with OK saves changes.

Hint: for simply changing compression / conversion options, enter Archiving interface with no input (empty layout), i.e. clicking “Add” button when no item is selected in file browser, modify options and save with OK button.

The arrow on the left of OK button shows **pre-set compression profiles and favourite formats** menu.

Compression profiles shows a pre-set list of most common file/archive management operations, in order to show inexperienced users how to solve common problems without the need of searching for appropriate options (i.e. how to add a password, how to keep the output below attachment size limit, etc), but also to offer experienced users a single handy switch to perform common tasks without the need of setting one option at time.

Favourite formats can be customized in Options > Settings > Create archive, by default it displays most commonly used formats.

Advanced

Use advanced filters checkbox shows if advanced filters are set or not; clicking the unchecked box will show the advanced filter's form to set inclusion/exclusion filters, clicking the checked box will deactivate advanced filters.

Enumerate folder options checks number and size of files and directories in the archive layout, for a better estimate of input size and possible output size (see “Potential compression” information in status bar). Unchecked by default, as the operation can be slow if a large number of files and directories is involved.

Halt system when task completes checkbox schedule shutting down the system when compression/conversion operation is completed.

Add “.enc” suffix to encrypted files adds the suffix before file extension, so encrypted files are easier to recognize – and can be easily grouped with filters for batch processing.

Append timestamp to archive name will append current date and time to the name of the archive, it is useful for archiving and backup purpose. A dropdown menu set the syntax of the timestamp, default: FILE.yyyymmdd.hhmmss

This screen also contains fine-grained options for each supported format, including compression level. Once advanced options for a given format are set, they are remembered, so it is usually not needed to use Advanced tab and all of archive creation can be done from Archive tab.

*Hint: most of **multimedia file formats** (like jpg, png, mpg, avi, mp3...) are already compressed with algorithms that are either lossy and/or strongly optimized for the specific data structure, so compressing them with general purpose lossless compression algorithms, even most powerful ones, are likely to provide only marginal benefits in terms of size, compared with huge benefits which can be obtained compressing other types of files (bmp, tiff, doc, xls, txt, html...).*

Consequently, it is recommended to use fastest compression settings, or fast algorithms (i.e. gz and zip’s deflate), or even “Store” option to don’t compress, to archive those types of files in a computationally efficient way; in this way it is possible to consolidate and optionally encrypt files that are sent to the archive, without spending much time for compression.

Backend executables can be used by PeaZip in the native console mode or, by default, through a graphic wrapper (see “PeaLauncher” chapter), displaying additional information usually not given by the console application (exit code explanation, input size, elapsed time in ms, speed in B/ms) and allowing to save a task report (console output plus additional information); this behaviour can be customized in Options > Settings.

7Z / p7zip - Performances scales very well on multicore machines; following formats are recommended:

7Z when high compression is desired; offers powerful encryption

ZIP to provide archives which all Windows user can read with integrated “compressed folders” utility, or with most of mainstream file/archive managers

TAR to provide archives which most Unix (Linux, BSD ...) users can read with applications usually bundled by default

WIM to create disk images for Windows environment

GZ, BZip2, XZ to compress single files or uncompressed containers, like TAR; GZ is the fastest, BZIP is slower but compresses better, XZ utterly improves compression but requires more memory and computing power.

Selecting a format supported through 7z executable (7Z, Bzip2, GZ, self-extracting 7Z, TAR, WIM, XZ, ZIP) it will be displayed the 7z option subpanel, featuring Options, Compression and Encryption group box.

“Compression” group box allows choosing compression level and algorithm and to fine tune compression options, which are format specific.

Last used compression level and method is remembered by PeaZip for 7z backend, but other custom options (dictionary, word, passes, solid block size) will be remembered only for the current session (until the archive type is changed or edited) and next times the last used compression level will be proposed with its default settings.

Option “Compress files open for writing” allows to add files to the archive even if open for writing by other applications, very useful when running backup tasks (otherwise, if the option is not checked, open for writing files will be skipped); the last used setting is remembered.

“Create self-extracting archive” options create a Win32 executable (.exe) that will self extract archive content (archived and compressed in 7z format); the receiver will then not need any application to extract the archive since all what is needed for extraction is embedded in the archive itself. As drawback the resulting file will be about 80KB bigger than the raw archive and the executable must be in a single volume (Volume size option will be greyed). Checking this option the user can choose between a console and a graphical interface (default) for the self-extracting application.

“Encryption” group box contains encryption related options:

- “Algorithm” allows to chose encryption algorithm; 7Z format supports AES, while ZIP supports AES and ZipCrypto algorithm. AES is always used with 256 bit keys. ZipCrypto is a weak algorithm but may be useful if the user need to generate encrypted .zip archives compatible with some outdated applications not supporting new WinZip standard AES-based AE encryption.

“Options” group box allows choosing other format specific options:

- “Function” replicate the same control in main Options tab.
- “Paths” - non persistent, kept for current session only - allows to save to archive **relative paths** of input items (default), or to preserve **full path** or **absolute path** (includes drive letter) information to allow extraction to original locations (option featured in archive extraction, advanced tab).
- “Threads” combo box allow specifying the number of threads to try to generate for parallelising and speeding up the execution of the application (possible only for LZMA, LZMA2, Deflate, Deflate64 and BZip2 algorithms) on Hyper threading-enabled / multi-core / multi-CPU environments; on Windows systems single processor systems will be recognized and will use “no multithreading” option by default while multi processor system will use “generic multithreading” option by default; on non Windows systems “no multithreading” is the default option.
- “Other” edit box allows to freely enter additional parameters for the archiving task. This string is inserted by default after all the parameters set by the GUI and its syntax is not checked, so use with caution.
- For WIM (Windows Imaging Format) files it is possible to set to include or exclude NT security information and NTFS Alternate Data Streams in archive, convert, and update operations.

ARC - *Recommended when high compression is desired; offers powerful encryption and, optionally, recovery records. Performances scales very well on multicore machines.*

In FreeARC’s options subpanel, it is possible to adjust compression level, specify file grouping strategy for solid archives, create recovery records to attempt archive’s repair in case of corruption, encrypt the archive with various encryption algorithms (AES, Serpent, Twofish, and Blowfish), archive with absolute or relative paths (default), create self extracting archives selecting from many sfx modules.

The format is currently being actively developed.

Custom - *Allows to select an external compressor/decompressor to support file types which are unknown to PeaZip*

Selecting “Custom” format, it will be displayed a subpanel allowing to specify archiver/compression utility to use to perform the task, alongside parameters (free editing) and syntax (the way parameters, input list and output name should be organized on the resulting command line).

Last 8 used custom executables are remembered and can be chosen from a popup menu rightclicking on executable’s selection control.

Please note that exact syntax of the command for a custom executable may need to be utterly adjusted, this can be done in “Console” tab, which allows importing and free editing of the task definition.

Pea - *Recommended when powerful encryption and integrity check are desired; provides fast compression*

Selecting Pea as archive format it will be displayed the Pea option panel; this is the archive format developed from the author of PeaZip and it is supported through Pea executable; for more information on it you may look the documentation about Pea on [help](#) and [FAQ](#) pages on PeaZip official website.

QUAD/BALZ/BCM - *Recommended when it is desired to provide average to good compression, with fast uncompressing*

Selecting QUAD/BALZ/BCM, the option subpanel will allow to choose compressor engine, and compression parameters (more can be set manually in “Console” tab). QUAD, BALZ, and BCM are simply compression algorithms not providing archival functions, and likewise other pure compression formats (GZ, BZ2, LPAQ) they can benefit of “TAR before” switch for handling multiple input files. BCM is supported out of the box, while other formats needs “Additional Formats Plugin”.

Split - *Recommended to split a single large file to the desired size, without attempting compression*

Options for file split are limited to optional integrity check algorithm to be performed on the file; integrity check information will be saved on a separate file, allowing files splitted by PeaZip to be joined by other similar applications (like Unix split, Hjsplit, FileTools etc).

UPX - *Recommended to developers to reduce the size of executables*

UPX compression is intended mainly for developers needing to reduce the size of executables before distribution.

It can accept only a single executable file at time and is not intended to be used as a general purpose compression utility; in fact misapplying Strip and/or UPX on non suitable executables (i.e. already stripped executables) may easily lead to unusable output executables.

It is possible to omit either UPX compression (selecting “do not compress” in “Compression” combo box) or Strip pre-processing (unchecking “Strip before UPX”).

By default it is created a backup copy of the executable before Strip/UPX (option “Keep executable’s backup”), named as the executable with .backup extension appended.

Please note UPX compression hampers further compression, i.e. if executables are part of a package which is then re-compressed before distribution, final result may be worse than without prior UPX compression of single executables – this does not apply to stripping of executables, which simply removes unnecessary data and does not change the possibility of compress it afterwards

***PAQ** - Recommended when highest possible compression is desired (experimental; speed and memory usage makes it not recommendable for general purpose use on current generation machines)

PAQ is a very powerful compression scheme and it's presently in research state; different versions and branches exist and you should use the very same implementation to compress and uncompress data, PeaZip uses PAQ80 for compression.

It brings unmatched compression ratio, better than any other compressor; the downside is that the algorithm has very high memory and computing power requirements for today's machines, resulting to be very slow if compared to mainstream compression algorithms, so the user should carefully consider if the speed/compression trade-off would be advantageous case by case.

To obtain best results while compressing many small files you should also consider consolidation them before (i.e. using tar) since PAQ would store filenames (and sizes) in uncompressed form.

ZPAQ is faster and lighter than PAQ, at the cost of a slightly inferior compression ratio.

Please note that for ZPAQ currently PeaZip supports only storing/extracting to full pathnames, so output options will be ignored for that format.

Console, Schedule

Console screen allow to export the task defined in the GUI as a script, that can be interactively edited, tested and saved.

Schedule screen allows a simplified one pass UI to save the task definition and schedule it in Windows' system task scheduler (Vista and newer systems).

Saving and scheduling an archive creation script is very similar to **define a backup task**.

Most relevant options for backup usually are:

- Archiving action by default is "Create new archive": alternatively action **Update** will spare time and disk occupation, only adding new files and overwriting older matching files; **Update only files already in archive** action will only "freshen" the archive, overwriting older matching items and ignoring (not adding) any item not already in the archive
- From advanced option "Compress files open for writing" allows to backup files open for writing by other applications, otherwise those files will be skipped
- From advanced options it is possible to set to include or exclude NT security information and NTFS Alternate Data Streams, for WIM format only
- **Append timestamp to archive name** will avoid naming conflict with other backup copies in same output path

For more information about creating scripts and define scheduled tasks, see "Save and schedule tasks" chapter.

Keyboard shortcuts and mouse controls for archive extraction and creation

Operations:

Archive / Extract (as Ok button)	Ctrl+Alt+Enter
Cancel (as Cancel button)	Shift+Backspace

Options:

Toggle extract to new folder on/off	Ctrl+N
-------------------------------------	--------

Archive types

Change archive type to 7Z	Shift+Ctrl+7
Change archive type to BZip2	Shift+Ctrl+B
Change archive type to GZ	Shift+Ctrl+G
Change archive type to 7Z self extracting	Shift+Ctrl+S
Change archive type to TAR	Shift+Ctrl+T
Change archive type to ZIP	Shift+Ctrl+Z

File tools:

Checksum/hash selected files	?
Compared selected file with...	=

Archive layout-related: (the archive list is selected)

Add file(s)	Ctrl+A
Add folder	Ctrl+F
Add from search dialog (drag to archive)	(context menu only)
Load archive's layout	Ctrl+L
Save archive's layout	Ctrl+S
Open object with default application	Ctrl+O or Enter or doubleclick
Open object with ...	Ctrl+W
Remove selected object from archive's layout	Cancel or Ctrl+R or Ctrl+Backspace
Refresh	F5 or refresh icon on the left of layout's titles row

Extract without confirmation (from browser and extraction interface):

Extract all to... (open selection dialog)	Ctrl+E
Extract all here	Ctrl+Alt+E
Extract all to Desktop	Shift+Ctrl+E

Mouse controls

Doubleclick: open selected object with associated application or browse folder

Rightclick: activate "create layout" context menu;

Save and schedule tasks

From “**Console**” screen, featured in archiving/conversion and extraction UIs, it is possible to transform the task defined in the GUI interface into a command line script that can be edited (independently from the task definition in the GUI frontend), clicking on the “Click to import...” arrow icon in the bottom area.

If the task definition is changed in the GUI the same label can be used to refresh the task definition.

When performing partial (selective) extraction from archive, the “Click to import...” icon can be rightclicked to modify the command line for operating on all, displayed or selected objects, if partial extraction of content is supported for the current archive type (7z, arc, rar, tar, zip...).

The task definition script can be edited, launched for testing, or saved as a text file for future use, i.e. study, scripting, analysis etc.

By default, PeaZip prompts to save script in its “Saved scripts” folder (unique for each user) that can be opened from Tools in main menu.

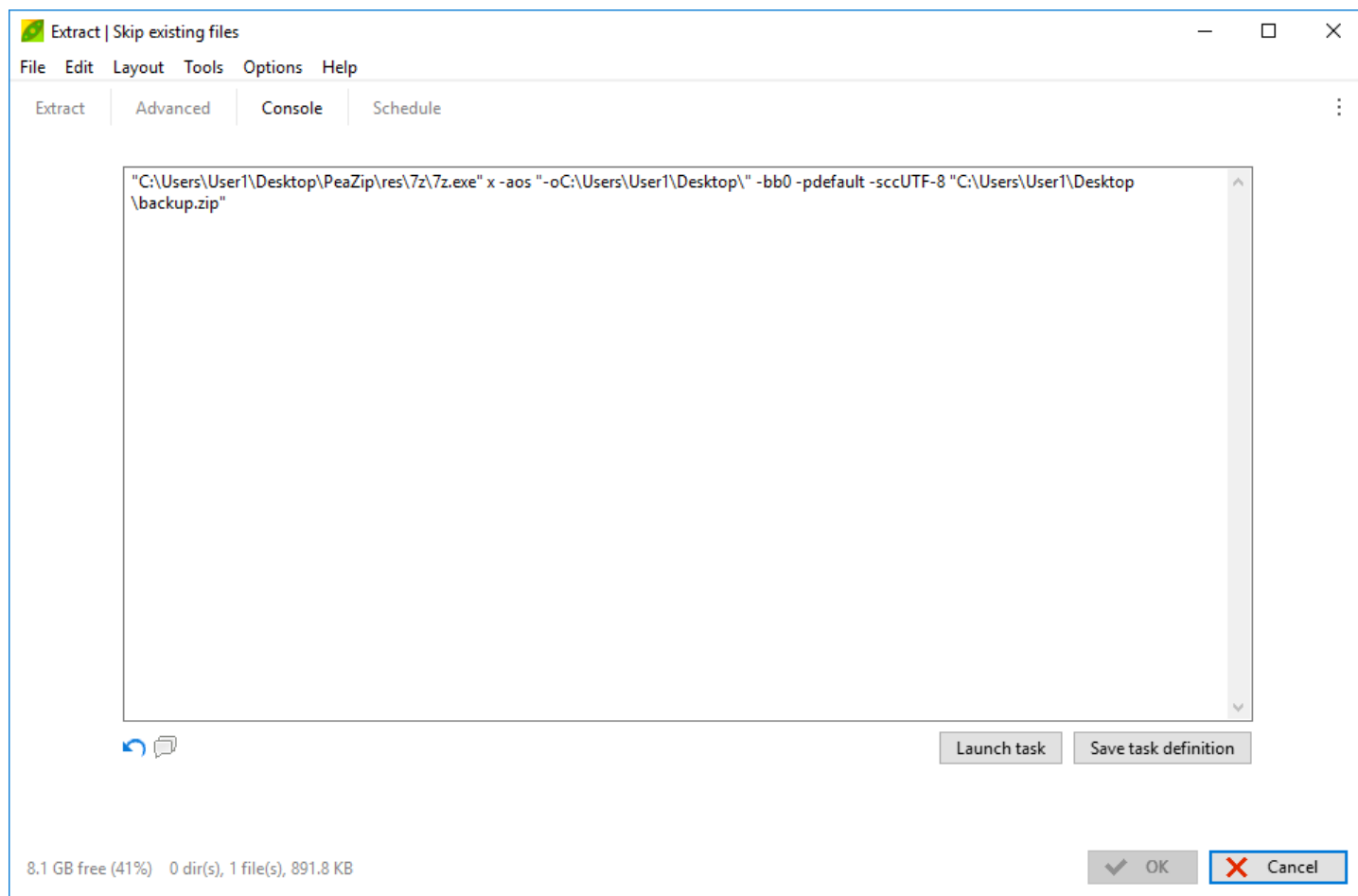


Image 17: Console tab

“**Schedule**” screen is also featured in archiving/conversion and extraction interfaces, only on Windows Vista and newer systems.

It is meant to help creating, in a single pass, a schedule to run the script generated from the task defined in the GUI interface.

The schedule is identified by a unique, editable name, which is used also as file name for the saved scheduled script.

“Manage saved scheduled scripts” opens PeaZip’s Saved scheduled scripts folder so script files can be edited to modify the task definition (what does the task do), copied, deleted etc.

“Task Scheduler, manage tasks saved in PeaZip branch” opens system’s Task Scheduler, PeaZip’s tasks are collected in PeaZip subfolder of scheduled tasks library (tree on the left of Task Scheduler window).

From system Task Scheduler it is possible to manage PeaZip’s scheduled tasks, i.e. for fine tuning the schedule (when does the task run), or deleting obsolete tasks.

Schedule dropdown menu allows to set the schedule on an hourly, daily, weekly, or monthly base, or once, starting at specified start time.

Optionally, it can be provided different user/password for running the task.

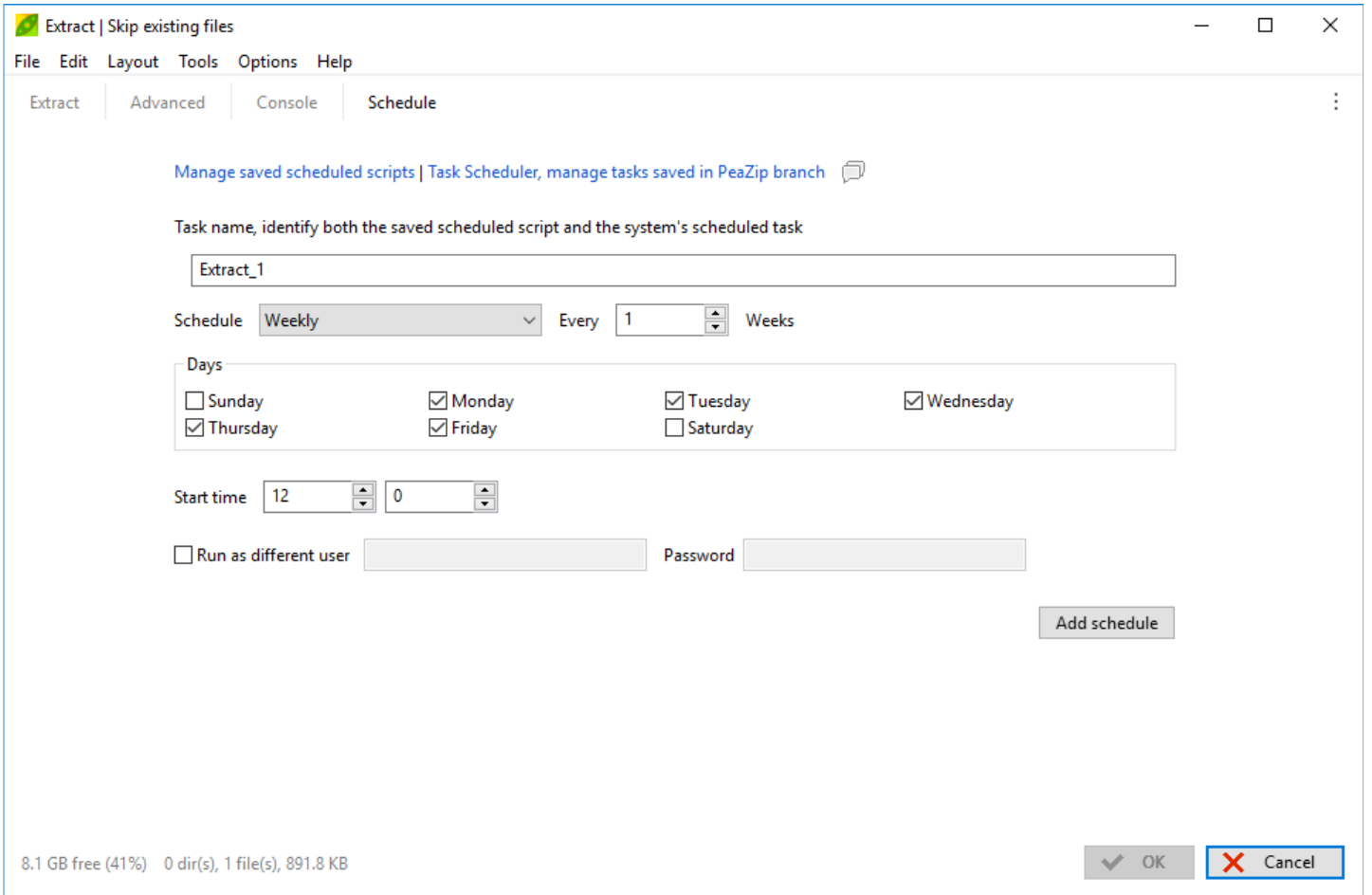


Image 18: Schedule tab

PeaLauncher

PeaLauncher is the task's graphic wrapper, a component that graphically displays an underlying task performed by a console-based backend used by PeaZip to create, extract, test or list an archive, allows to save command task as command line, and to save task report.

The form is organized in four tabs

- **Status** (default), showing essential information and graphic about the process. The dropdown menu on the left of Cancel/Pause buttons allows to change process priority and stop all subsequent submitted tasks.
- **Report**, showing detailed feedback from the process (through stdout)
- **Console**, displaying the exact command executed – for inspection or learning purpose
- **Options**, allows to set, for the current task, if the output path should be opened at the end of the task, and if to shut down the system when the task has terminated. This last screen is available only while the task is running.

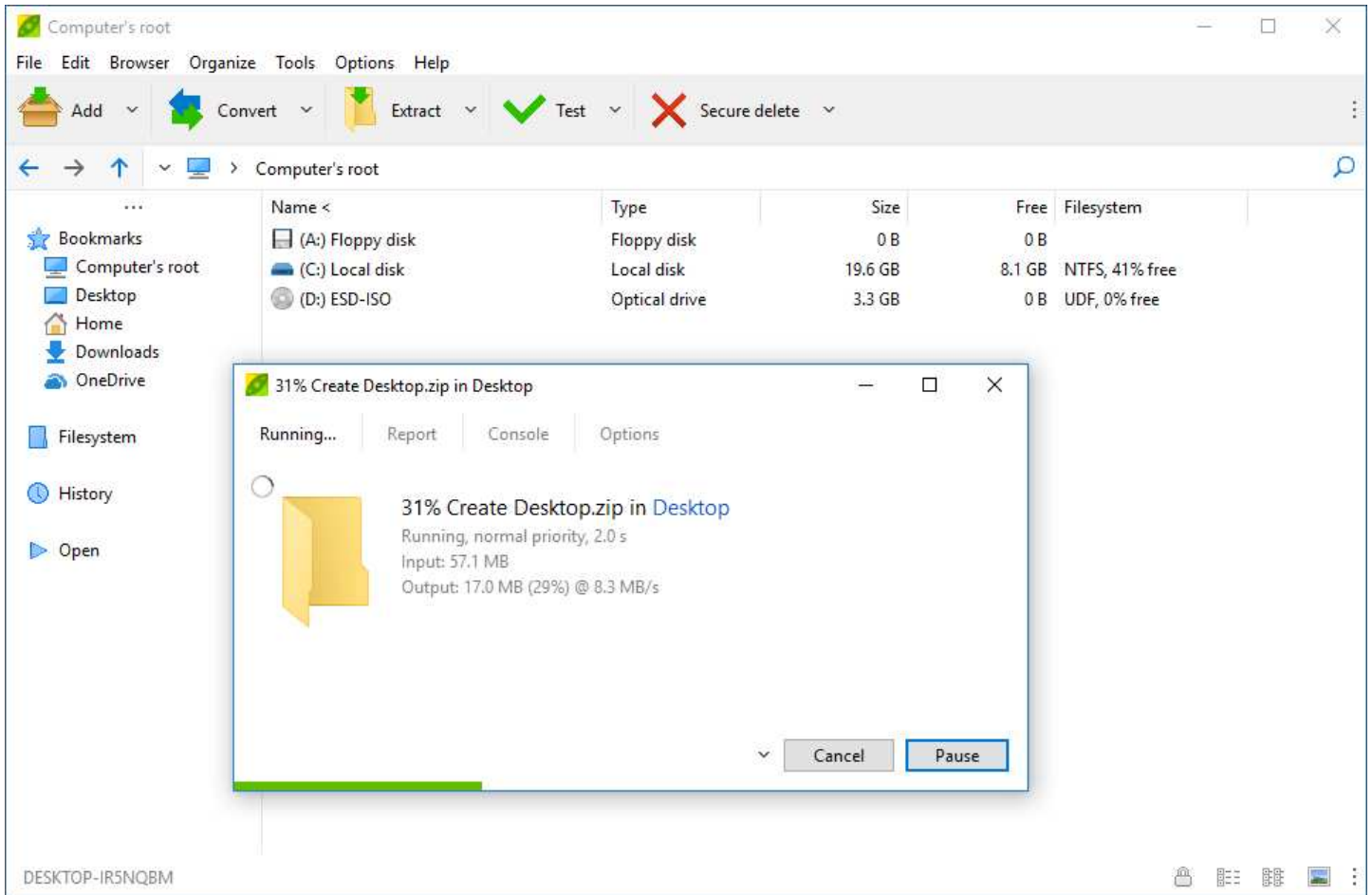


Image 19: PeaLauncher instance running in foreground, PeaZip in background.

By default, the window closes if no errors are detected, but remains always open for test, info and list tasks which requires the user to read the task's report; it is possible to always keep the task's window open after task termination so it is easier to inspect task's log and command line, selecting "Always keep open" in PeaLauncher combo box in Options > Settings.

The graphical wrapper is not invoked if tasks are running in console interface, either because they need to run in console (UNACE, UPX) or because the user selected to use "Console interface" in program's options; however list and test always run in graphic wrapper mode using pipes to give readable task log.

In console mode, the console will automatically close when task is completed without prompting any message if the task completes without errors, otherwise an error report will popup.

PeaLauncher can run also in "GUI + console" mode (see Settings chapter) displaying both the graphical interface and the underlying task running in its native console interface, showing its native progress indicator, usually more detailed and reliable than GUI's one.

PeaLauncher can be invoked with no parameters, or with a single archive file as parameter (i.e. dragging an archive over the executable, or a link to PeaLauncher), to be used as a minimalist standalone extraction application.

Settings and Help system

Options > Localization allows to set application's language; the application will be restarted with chosen localization.
Options > System menu language (Windows) allows to set language of the application's entry in system's context menu.

Options > Settings brings to main tab of Settings and Help interface, which allows to configure behaviour and aspect of PeaZip application.

Help > Help (F1) and About brings to respective tabs of Settings and Help interface

*This entry is available also for PeaZip Portable and allows to integrate the software in the system if desired.
To remove system integration it is possible to run this function and chose "none of the above group" for files, context menu and SendTo menu, or else running unins000.exe in PeaZip's folder (unins001.exe for the installable version) for complete removal of any integration with the system.*

Reset button asks for removing current PeaZip configuration (includes recent archives history), and separately for removing other customization files: Applications (to reset custom file associations inside PeaZip), Bookmarks, and Password manager.

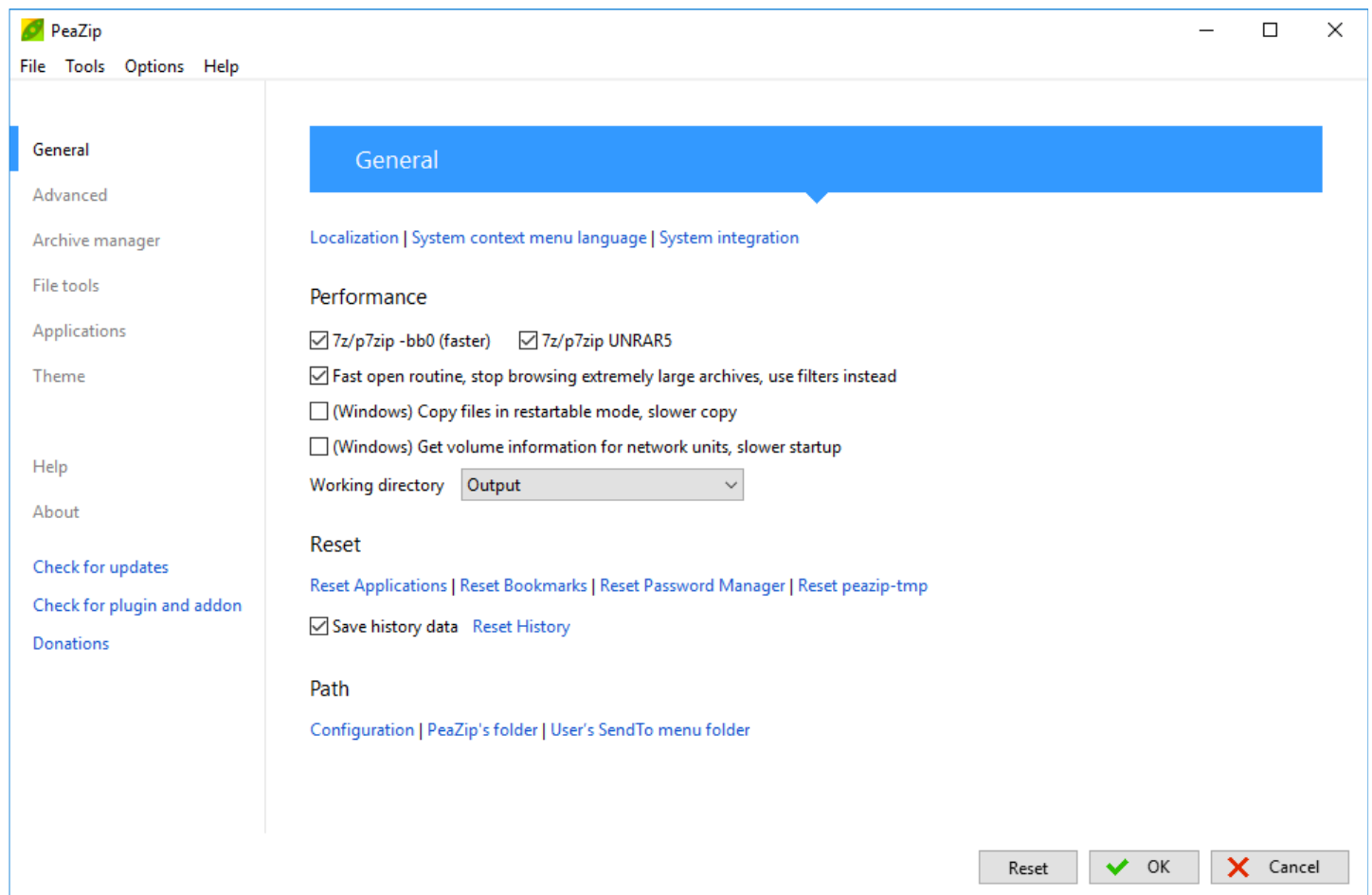


Image 20: Settings and Help

General

- Localization, System context menu language, and System integration: replicate the entries with same name featured in main menu > Options.
- Show which options are volatile / context dependent (default off) displays in italic font the options which are not permanently set, as the application needs to toggle them automatically - meant for clarity and learning purpose
- Performances groups settings with significant impact on program's performances
 - 7z/p7zip -bb0, checked by default, uses a less verbose backend reporting mode which is faster

- 7z/p7zip UNRAR5, checked by default, uses 7z/p7zip routines for extraction of RAR5 format (even if UNRAR5 Plugin is installed); uncheck if you want to use RarLab-based UNRAR5 Plugin as alternative RAR5 extraction engine. Note this setting is overridden by “Free Software compliance” directive set to > 0.
 - “Fast open routine, stop browsing extremely large archives, use filters instead” (default) PeaZip will stop browsing archive’s content in the GUI if the resulting list’s memory stream is very large and would significantly slow down the operation. It allows to quickly opening very big and populated archives stopping preliminary operations if they are taking too much time/memory, allowing users to narrow the selection with full functional search or filter functions. Extract/list/test operations are not affected by this setting, it is applied to archive browsing only.
 - “(Windows) Copy files in restartable mode” (off by default) when activated, on Windows, copies files with Robocopy in restartable mode, which is slower but can be useful on networks to automatically retry and continue the operation in case of errors.
 - “(Windows) Get volume information for network units” (off by default) when activated checks for size, free space and other information about network mapped units. If the network is slow or a mapped unit gets disconnected, the operation may require many seconds, so if a slowdown is detected this option is automatically unchecked, but is always possible to change the value manually as desired.
 - “Working directory” (output folder / system’s temp folder / none) allows to set the temporary working directory for archive creation/updating or archive preview operations, by default the output path is used to avoid copying data from system’s temp or cache to intended destination – which may be on a different unit, doubling the write to disk operations.
- Privacy and reset:
 - Privacy policy dropdown menu is meant to help users working with sensible data to not forget setting a password for operating on the data (either for archiving or extracting it); the directive can be hardcoded to mode 1 or 2 at compile time, disabling and overriding this setting
 - default value don’t ask user to set a password at startup of the application, which works as usual
 - “Ask to set password at startup” prompts the password / keyfile dialog when the application starts, so any following tasks (read or write archive) will be performed using that password (unless changed); it is simply a reminder and can be dismissed closing the password prompt
 - same as previous, mandatory, password dialog cannot be skipped
 - “Save history data”, on by default, keeps track of recently created archives, visited paths and archives, and search terms. Disabling the option history will not be tracked, and menu of recent files/folders and recent searches will be not available
 - Reset History: delete records of latest paths and visited or created archives
 - Other selective reset switches
 - Reset Applications: delete configuration of custom editors/players/scripts/websites etc that can be associated to override default system’s associations in “Open with...” tab, and parse the system to build a list of default application for “Open with...” menu
 - Reset Bookmarks
 - Reset Password Manager
 - Reset peazip-tmp (Windows) forces deletion of temporary work folder created by the software when performing context menu archiving/extraction operations (PeaZip takes care automatically of its temporary files, and under normal circumstances this reset switch can be ignored); if it is not possible to delete the folder, it will be opened for manual inspection – closing other active instances of the program from Task Manager (or restarting the system) is recommended if temporary files cannot be removed otherwise.
 - “Path” group contains links to relevant application’s paths
 - “Configuration”, containing configuration conf.txt, last known good configuration conf-lastgood.txt, bookmarks bookmarks.txt and custom applications list for “Open with” menu custedit.txt, and the persistent randomness collector file rnd
 - “PeaZip’s folder” main folder of the program
 - “User’s SendTo menu folder” help in creating, editing and removing SendTo menu links, and to copy those entries from one user to another, or from reference examples in SendTo.zip file in program’s directory.
 - “Desktop” contains the path of user’s desktop; it also allows to set an arbitrary path to be used as desktop for the application, if preferred - can be clicked to explore current path set as desktop.
 - “Start from” set the directory PeaZip file browser will start in: last visited (default), computer root, desktop, home, custom – let the user specify the directory where the application will always start from.
 - “Encoding” group contains character encoding related options
 - “Encode task definition as UTF-8 text”: if checked task definition files are saved with UTF-8 encoding header, otherwise no header will be prepended to the file.
 - Archive browser interface’s character encoding option: if flagged, displays extended characters in archived object’s names as UTF-8 text, otherwise replaces extended characters with “?” jolly character.

Note: replacing extended characters with “?” jolly character may improve commands syntax if, for any reason (i.e. limitations due to guest OS, archiving software creating the archive being read, or archive format limitations), the character set used while creating the archive cannot be successfully translated on the current machine opening the archive.

- 7z/p7zip's -mcu if flagged allows to use UTF-8 encoding inside ZIP archives for file names that contain non-ASCII symbols
- 7z/p7zip -scc allows to set the character set to be used in list operations for archive types supported through 7z/pzip backend, default is UTF-8.
- “Backend binaries user interface” group allow to choose the way the backend command-line applications behaves
 - User interface type
 - console mode: native console interface, giving detailed and real time progress indication;
 - graphic, default: use a graphical wrapper with pipes, giving a very detailed task log and allowing to pause, resume and change priority of the task;
 - graphic + console: like the previous, but also showing native console interface: gives a responsive UI and at the same time plenty details and real time progress indication.
 - “Keep open” conditions
 - always keep the window open, useful to inspect task’s report and command line
 - keep open only if needed (default), keeps the window open only in case of errors, or for test, info and list tasks requiring the user to read the task’s report
 - run minimized, run the task’s window minimized in order to not steal focus from other activities, but show the task’s window if needed (error, list/test tasks).
 - always force to close the window at task termination, regardless the kind and the result of the task
 - Free Software compliance policy help end users, administrators, and distributors to enforce usage of free-as-in-freedom software, allowing to prevent any call to non-free software under OSI definition (which can then be safely removed from PeaZip package); to further enforce it, the directive can be hardcoded to mode 1 or 2 at compile time, disabling and overriding this setting
 - “permissive” (default) allows any available backend, allows to handle any supported archive format
 - “flexible” allows only Free Software components (royalty-free UNACE and UNRAR5 plugging will be disabled), handling any archive formats they support
 - “strict” allows only Free Software components, allows only to handle open archive formats (not encumbered by patents / copyright either for writing or reading)

Archive manager

- “Default format” sets the default archive/compression type, by default last used format is kept
- Try to open archives containing errors (default off) allows to browse archives even if errors are detected, can be useful to handle bogus or corrupted archives - not recommended, for security and stability PeaZip by default does not open such archives
- “Favourite formats” allows choosing a selection of user’s favourite formats to be displayed in the popup menu on the left of Ok button in archive creation interface, and from context menus for Add and Convert buttons in the tool bar, for a quicker selection.
- “Extract” group contains additional file extraction settings
 - “Always ignore paths...” directives: ignore paths extracts file(s) to output path not re-creating the directory structure as is in the archive, by default it is on for drag and drop and extract and open with operations. It can be fine tuned applying the directive to:
 - Drag and drop operations
 - Extract and open with... operations
 - Extract displayed objects (objects shown in current browsing or search filter)
 - Extract selected objects

Hint: when extracting a folder from the archive the paths will be always preserved, overriding this option for all ignore paths switches; see Extract archives chapter, Note about extraction paragraph for more information about how extraction operations can be fine tuned and customized in PeaZip.

- “Remove redundant directory on extraction in new folder” switch (default on) moves extracted content up one folder if unnecessary level of nesting is detected – i.e. if Extract to new folder creates /output/output/content, the switch will move content up one directory, resulting in /output/content.

File Tools

- “Secure deletion” group allows choosing number of passes to perform to securely delete files (2-16); each pass perform: overwrite file with random data, mask original file size, rename file.
- “Checksum/hash files” group allows to select algorithms to be used for file checksum/has and how to display the result (hexadecimal, hex LSB, Base64). It also set the checksum/hash algorithm for file browser (default CRC32)

Applications

This screen allows to organize **custom applications** (or scripts, or commands, or websites) to be used to open files overriding system’s file associations, saved to a separate configuration file “custedit.txt”.

Applications can be sorted dragging up or down the application’s number in the list; double click on cells to edit or remove applications and descriptions, rightclick for more options.

“Reset Applications” button wipe current application lists (basic and advanced) and try to find on the system (and configure for use in PeaZip) some common utilities and anti-virus scanners.

- “Basic” group (up to 16 applications or scripts) allows editing custom application with ease, selecting or typing the application or command to be used to open a file (or preview a file inside read-supported archives). It is also possible to enter parameters after command or application name in the same string; after the “Executable or command” string it will be passed a blank space and the input file name.

Note: in this group can be defined also websites/webservices to pass the filename to as parameter; in those cases (detected by PeaZip if the name of the app starts for www. or http:// or https://) only the filename is passed, not the full qualified name (path+filename) as for local applications.

- “Advanced” group allows instead a bit more complex syntax, providing a string to be entered before, and one after, the input file name (and it’s up to the user decide if spaces between strings and file name are needed). In the last column of the table it is possible to enter the syntax for the application when no file is passed as parameter, as this case may require a different syntax, or even invoking a different executable.

Note: by default antivirus / antimalware scanners are defined in “Advanced edit” set, because some of them requires a quite complex syntax, but it is only a convention.

Note: syntax’s examples of preset applications can be used as model to start customizing entries in both sets; clicking an entry in “Advanced edit” set will show a line displaying complete command entered, with the pseudocode “%f” representing the input file name position in the command string.

Theme

Themes set the default values various visual settings of the application, and for Pea and PeaLauncher executables.

Theming values can be saved in the current configuration, and will override correspondent theme settings, which can be restored clicking on “Reset” link for each variable.

To prevent using of too high levels of transparency that will make the application unusable (up to totally invisible) there is a maximum level of transparency hard coded for the application.

From Options > Themes, in the “Theme” drop down menu the user can chose to use preset themes which comes packed with PeaZip, or a custom theme, selecting a theme package with extension “.theme.7z”.

Themes can be downloaded from “Download themes” link on the same panel, pointing to Add-Ons page on PeaZip official website.

The user can also create new themes clicking on “Create Theme from current settings”, it will be created a theme package on the desktop named nameofthetheme.theme.7z; themes can be distributed as independent packages.

To further customise themes, or to remove unwanted themes, “Manage Themes” opens the path containing themes, that is in user’s application data for installable versions or inside PeaZip’s folder for portable versions.

Theme’s graphic can be edited with any graphic files editor, and theme.txt can be edited as UTF-8 text.

The file note.readme (plain text) is inherited from the original theme, please edit it with relevant information and credits about the new theme if you plan to release it.

It is recommended to not delete or modify the default theme, saved in \PeaZip\res\themes\, that is “seven” for Windows versions and “firecrystal” for Linux versions

It is possible to display a custom logo (up to 192 px width, 64 px height) in PeaZip file manager’s toolbar, replacing fm-theme.bmp in theme’s folder with a custom graphic file in BMP format.

Program’s icons, on Windows, are stored in \PeaZip\res\icons\ path and can be edited with a suitable editor or replaced with custom icon files; on Linux systems icons (in PNG format) are stored accordingly the distribution and the desktop environment policies, i.e. \opt\kde3\share\icons\ or \usr\share\icons\

Hint: custom, user-provided icons and other resources can be found on Add-Ons page on PeaZip official website

Advanced settings editing

Program’s configuration is stored in conf.txt file and last known good configuration (successfully loading) is saved in conf-lastgood.txt and it is automatically used to restore previously working state if conf.txt fails to load.

If even last working configuration fails, PeaZip will load pre-set values and save a new standard configuration file.

Configuration is saved by default in /res folder in application’s path. An alternative location, either as absolute or relative path, can be set in second line of altconf.txt file in the same folder: “**same**” string in altconf.txt specify the data has to be saved in program’s res path (best for portable packages) and “**appdata**” specify the data has to be saved to %appdata%\PeaZip\ path in user profile (Windows) or /.PeaZip/ path in user’s home on Unix systems, to guarantee write access to data from current user’s profile and allow different users to store different and private profiles for PeaZip.

In this way only the invariant data (including altconf.txt, binaries, graphic and default themes, language files etc), which needs to be accessed only for reading during normal program's usage, is stored in program's path, that could be even set as read-only.

All variable data files (conf.txt, rnd, custedit.txt and bookmarks.txt), which can need to be accessed for writing during normal program's usage, will be stored in res folder (by default) or any other path specified in altconf.txt.

If the altconf.txt file is deleted, it is needed to re-create, or copy it from PeaZip or PeaZip Portable packages, in order to determine if the software will work as installable or portable version – in the meantime PeaZip will load pre-set values and run in volatile mode without saving configuration (which does not allow user preferences to be remembered).

Supported formats

See also [Learn more](#) page on PeaZip official website.

Main families are:

Through **Pea** executable (LGPL, Windows and Linux)

- Full support
 - PEA: security focused, flexible integrity check and optional two factor authentication with passphrase and keyfile (AES, Serpent, Twofish, 128 and 256 bit, used in EAX mode authenticated encryption), fast compression comparable with Zip/Gzip, native multi volume spanning.
 - Split: compatible volume spanning (file split/join) function with optional integrity check

Through Igor Pavlov's **7z** (LGPL, Windows) and Myspace's POSIX **7z** (LGPL, Linux)

- Full support
 - 7z, 7z sfx: feature-rich archiving format, strong AES encryption, awesome compression ratio and optionally auto extracting archives (sfx, Win32 executables)
 - Bzip2 (BZ, BZ2, TBZ, TBZ2): single file compressor, adequate speed and good compression ratio
 - Gzip (GZ, TGZ): fast single file compressor, adequate compression ratio
 - TAR: mainstream archiving and backup format for Unix platforms, often used to archive data to be compressed with GZip, BZip2 or other algorithms
 - WIM (and SWM) Windows image format, Microsoft's disk image format
 - XZ: single file compressor, based on LZMA2 algorithm, providing excellent compression ratio
 - ZIP: mainstream archiving and compression format for Windows platform; support covers also Deflate64, LZMA and PPMd compressed archives, and AES-encrypted archives
- Browse/extract support
 - ARJ, LHA, LZH: popular archiving format on DOS and early Windows platform
 - CPIO, Z, TAZ, TZ: archive/compression formats for Unix platforms
 - LZMA: single file compressed with LZMA algorithm, introduced with 7z format
 - RAR/RAR5: popular archiving and compression format, with advanced encryption and error recovery features
 - 7z/p7zip frontend, since release 15.06, manages both legacy rar files (up to RARv2.9/RAR4 format) and new RAR5 files; users can chose if handling RAR5 using 7z/p7zip (default) or RarLab's royalty-free "unrar" backend (only available as separate plugin due the non-OSI compatible nature) checking "7z/p7zip RAR5" flag in General Options.
 - Various archive types based on ZIP or its modifications
 - Java archives: JAR, EAR, WAR
 - PAK, PK3, PK4 : modified zip archives, used to store data by some popular games (like Quake3, Quake4, Doom3)
 - SMZIP
 - UP3: U3 portable application's package format
 - XPI: Mozilla package format (addons for Firefox, Thunderbird etc)
 - MBR, FAT and NTFS filesystems
 - Various disk images
 - ISO standard disk image format
 - IMA, IMG, IMZ images
 - UDF widespread disk image format
 - Various executable file types
 - NSIS: Open Source Windows installer format
 - Some Windows executables
 - MSI Microsoft's proprietary installer format for Windows
 - Various (non-archive) compressed file formats, like
 - CAB compressed archive format
 - Compound
 - Some of MS Office formats: DOC, XLS, PPT
 - CHM, CHW, HXS compressed help files
 - OpenOffice file types: container files for text, database, image and multimedia data: ods, ots, odb, odf, odg, otg, odp, otp, odt, ott, oth, odm, oxt.
 - Gnumeric .gnm files
 - SWF, FLV
 - Various Linux installer formats:
 - DEB (Debian based)

- PET/PUP (Puppy Linux)
- RPM (Redhat based)
- SLP (Stampede Linux)
- Various Macintosh formats: DMG/HFS package/disk image format

Through **PAQ/LPAQ/ZPAQ**, Matt Mahoney et al. (GPL, Windows and Linux)

- Full support
 - PAQ80, ZPAQ, LPAQ8

Through Ilia Muraviev's **BCM** (Public Domain)

- Full support
 - BCM: high performance Burrows-Wheeler Transform -based compressor

Through **Strip** (GNU binutils) and **UPX** (GPL Markus F.X.J. Oberhumer, László Molnár and John F. Reiser)

- Compression only
 - Strip strips symbols from executables and UPX apply compression: this allows containing the size of binaries of different types (exe, elf, etc...), which is important i.e. for distribute smaller packages; this feature is mainly oriented to developers.

Through Bulat Ziganshin's **FreeARC** (GPL)

- Full support
 - FreeArc's ARC/WRC, FreeArc's sfx: experimental archive format, featuring efficient compression (high ratio and good speed), and advanced features like strong encryption and recovery records

PeaZip UnRar5 Plugin (SEPARATE PLUGIN)

No longer needed since PeaZip 5.9.0 release, provided as alternative RAR5 extraction engine, and for older versions support. Contains Eugene Roshal (win.rar GmbH) RarLab's **unrar**: royalty-free, source is available but unrar restriction (limitation to freedom of use of the code, disallowing to use it to create a rar compressor) makes it non-OSI compatible, featured as alternative to integrated RAR5 support, currently only needed on Linux as p7zip does not yet support rar5 format

- Browse/extract support
 - RAR files detected using RAR5/v5.0 revision structure
 - Due the different syntax between RarLab's unrar and 7z/p7zip's unrar, following differences apply when handling RAR5 format:
 - recursivity with advanced filters is always enabled
 - renaming options always rename the file being extracted

PeaZip UnAce Plugin (SEPARATE PLUGIN)

Through UNACEV2.DLL 2.6.0.0 (Windows) and UNACE (Linux): royalty-free, proprietary, Marcel Lemke, ACE Compression Software

- Browse/extract support
 - ACE: popular compression format, used mainly on Windows systems

PeaZip Additional Formats Plugin (SEPARATE PLUGIN)

Through Ilia Muraviev's **QUAD** (GPL) and **BALZ** (Public Domain)

- Full support
 - QUAD: high performance ROLZ-based compressor which features high compression ratio and fast decompression
 - BALZ: enhances overall performances compared to QUAD

Through **PAQ/LPAQ/ZPAQ**, Matt Mahoney et al. (GPL, Windows and Linux)

- Read only
 - Older PAQ8 formats F/JD/L: experimental compressor; at cost of high computing time and memory usage provides best known compression ratio for most data structures
 - Older LPAQ1 and LPAQ5: lighter and faster version of PAQ, at the cost of some compression (single file compressor)

PeaExtractor

PeaExtractor is an alternative GUI, provided by pealauncher executable, focused on basic archive extraction tasks only. It supports extraction of a single archive at time, and does not provide an in-archive browser.

Input archive can be selected via a standard file selection dialog, or can be simply dragged on the application; a link to system search is provided, so it can be started to find the file to be dragged on the application.

PeaExtractor can be accessed from Tools menu in main application's menu, or starting without parameters the executable pealauncher in pezip/res path.

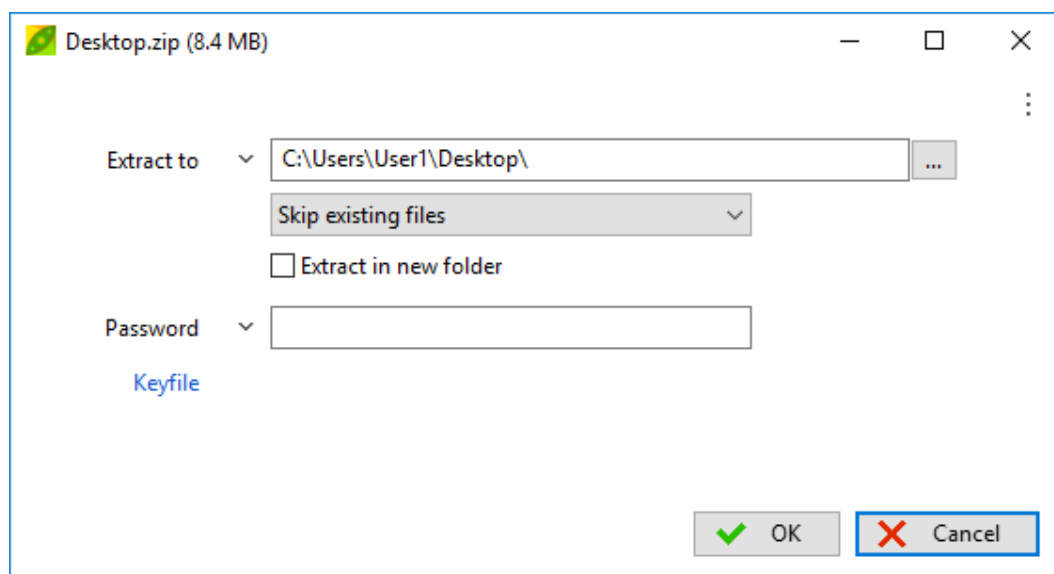
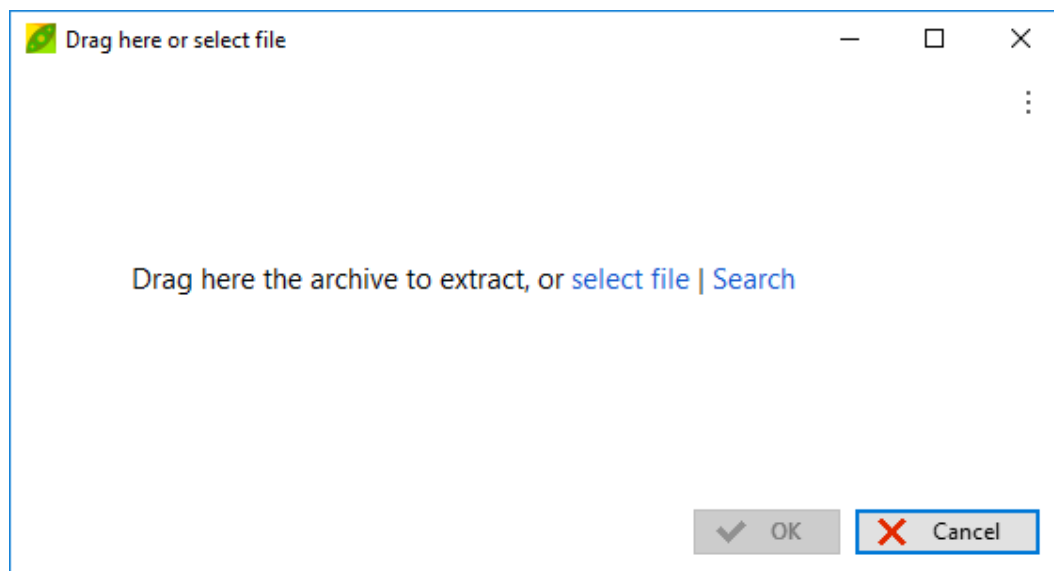


Image 21: PeaExtractor

PeaUtils

PeaUtils is an alternative GUI, provided by pea executable, focused only on launching various integrated file utilities features. Function context menu provide a choice between supported utilities, i.e. apply single or multiple checksum and hash algorithms, secure delete files, secure deletion or zero deletion of free space on a drive (Windows only), list files (can be saved to file), display environment variables.

Input file(s) can be selected via a standard file selection dialog, or can be simply dragged on the application; a link to system search is provided, so it can be started to find the file to be dragged on the application.

PeaUtils can be accessed from Tools menu in main application's menu, or starting without parameters the executable pea in pezip/res path, or with command line "pea peautils [n]" where n is a number from 0 to 11, an optional parameter pointing the GUI to start with a specific function (the number is the order of the function in the dropdown list).

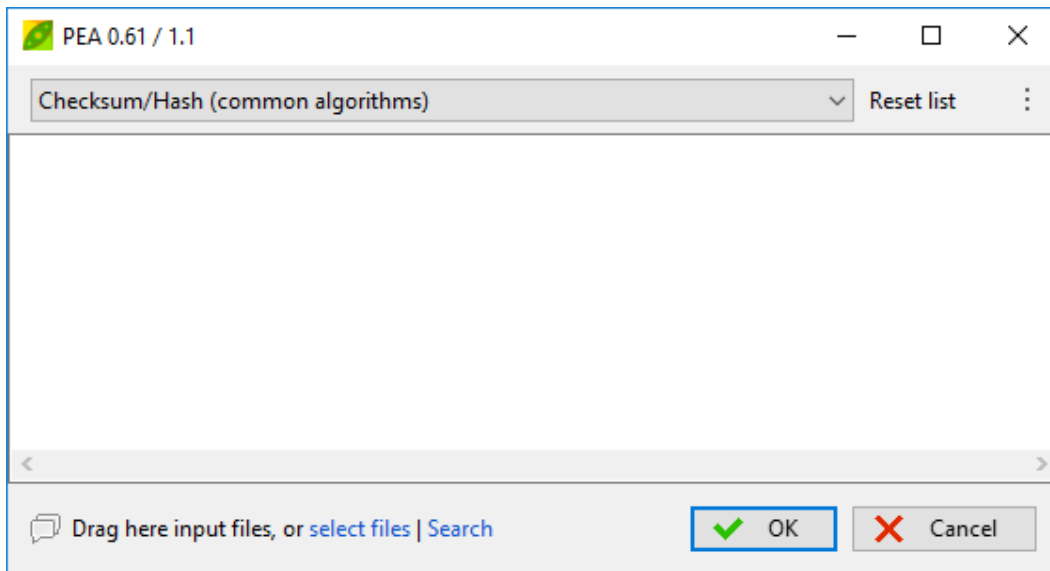


Image 21: PeaUtils

Customisation and scripting

PeaZip portable doesn't need installation and doesn't modify the host system, however program's most used functions can be integrated, under Windows, in SendTo and context menu and, under Linux, in FreeDesktop-compliant desktop environments through .desktop files (Gnome, KDE...) and Nautilus scripts (Gnome); examples are in FreeDesktop_integration folder included in Linux packages.

In the same way it is possible to extend the integration automatically provided by installable packages, creating quick links in system's menus or in scripts for most of the program's internal functions.

PeaZip acts as a frontend for many Open Source archiving executables, each with its own syntax developed and maintained by respective third parts Authors, see "Supported formats" chapter for a comprehensive list of technologies employed in PeaZip.

For the syntax for each backend executable please refer to the original Authors and the original documentation (i.e. in 7-Zip's or FreeArc's documentation and websites), however one of the scopes of PeaZip is offering a simple and homogeneous command line interface to mask the complexity and the differences in command line syntax of underlying applications.

Quick access to most used PeaZip's functions is provided passing as first parameter a constant string value identifying the quick function; those methods can be used invoking PeaZip from scripts or also creating a link to PeaZip executable with the given first parameter (on any host system).

While through PeaZip's GUI it is possible to use underlying applications with great granularity (and save command lines for any further use), PeaZip itself is made accessible through command line to offer an easy access to most common functions.

The full list of strings accepted as quick link to PeaZip functions when passed as first parameter is:

- add2archive: add to a new archive and open PeaZip GUI to set archive's type and options;
 - add2archive-add as -add2archive, but add to existing archive (if found)
 - add2archive-update as previous, but update older files only
- add2pea: add to a new .pea archive;
- add2crypt: add to a new encrypted .pea archive;
- add2split: raw split a single input file;
- add2wipe: securely delete selected file(s);
- add2compare: byte to byte compare two files;
- add27z: add to a new .7z archive;
- add27zmail: add to a new .7z archive and attach it to a mail (requires compatible mail client) *
- add2separate7z: add each input to a separate new .7z archive;
- add2sfx7z: add to a new self extracting 7z archive (.exe);
- add2sfx7zmail: add to a new self extracting archive and attach it to a mail (requires compatible mail client) *
- add2zip: add to a new .zip archive;
- add2zipmail: add to a new .zip archive and attach it to a mail (requires compatible mail client) *
- add2separatezip: add each input to a separate new .zip archive;
- ext2browse: open (and browse if applicable) the archive(s) in PeaZip GUI;
- ext2browsepath: browse the selected folder (or its path, if a file is selected) in PeaZip
- ext2full: extract archive(s), opening main GUI allowing to specify i/o options, password and keyfile (interactively);
- ext2here and -ext2folder: extract archive(s) to its own path, "folder" variant creates a new folder named after the archive;
- ext2to and -ext2tofolder: extract archive(s) interactively asking for output directory;
- ext2simple and -ext2simplefolder: simplified "blanket" extraction command for all backends, allows to specify output path as first parameter;
- ext2list: list archive(s) content, to quickly look what is in the archive;
- ext2test: test archive(s) content;
- ext2main: extract archives from main applications "Archive extraction" interface;
- ext2commandprompt: open the command prompt in the selected folder (or in its path, if a file is selected)
- ext2openpwtest requires password as paramstr(2) (always delimited) and archive's full name as paramstr(3): try to list the archive and terminate with exit code 0 if archive is not encrypted, 1 if it is encrypted, 2 if it is non readable (corrupted or with encrypted file list), -1 if archive is not found.
- peazipreset: reset PeaZip configuration, as Options > Reset button; can resolve unexpected problems with configuration, restarting the application with factory settings

**mail functions require a compatible mail client, like i.e. Outlook and Outlook Express, to be the default mail client of the system*

-add2archive, -ext2main and -ext2browse open the PeaZip GUI, to allow further user's interaction

Alternatively, on Windows platforms PeaZip can also send multiple input to a single instance through registry entries using temporary files; temp files are deleted automatically (otherwise the mechanism would not work) but in case of any kind of problem there is a reset switch in Options > Settings first tab to remove any possible leftover:

-add2multi works like -add2archive

-add2multi7z works like -add27z, but stays in the archiving interface until the user click "Ok" button; it can be modified in -add2multi7zfastest, *normal, or *ultra to directly set the compression to fastest, normal or ultra levels presets (the compression method used is the one defined by the user)

-add2multizip works like -add2zip, but stays in the archiving interface until the user click "Ok" button; likewise the previous switch it can be modified to *fastest, *normal, or *ultra compression level

-add2multisfx works like -add2sfx7z, but stays in the archiving interface until the user click "Ok" button

-ext2multi works like - ext2main

While the instance accepting files is open, it is possible to continue adding input from the same directory selecting objects and using context menu's entry, as an alternative to dragging the object to the application window that might be less handy if the desktop is crowded by windows.

Example of command line syntax for archiving: *peazip -add2zip file1 file2 directory3*

which will add specified objects (in the example file 1 and 2, and all content of directory 3) to a .zip archive, auto named after the 1st object (in this case will be named file1.zip and will be saved in the same path of file1); using -add27z instead of -add2zip will perform the same task but will result in a .7z archive (-add2pea will result in a .pea archive, -add2sfx7z will result in an self extracting executable and so on).

Example of command line syntax for extraction: *peazip -ext2here archive1*

which will extract archive1 in the same path; using -ext2folder archive1 will be extracted to a new folder named "archive1" in the same path of archive1.

Another example for extraction: *peazip -ext2simple destinationdirectory archive1 archive2 archive3*

Extracts archive1, archive2, archive3 to destinationdirectory output path.

For all extraction command it is also possible to pass directory names as input, directories will be scanned and found archives will be processed.

Translations

Language files are UTF-8 encoded text files which can be edited using any suitable text editor.

To create a new translation file you can:

1. copy en.txt (in PeaZip's path in /res/lang subfolder) or any other language file, if you prefer starting from another language, to a new file;
2. edit lines 2 to 6 of the document to enter language name (both in English and in the original language for better readability), PeaZip's **version (major.minor) the translation is aimed to**, translator's and last last revisor's name and last revision date;
3. translate the text after the "variable_name: " part in "=== PeaZip text group ===" AND "=== PeaLauncher text group ===" sections of the file (don't move or remove lines, don't change the "variable_name: " part);
4. optionally, translate the mini-tutorial after "=== about text group ===" line (free editing, it is loaded and displayed "as is" as application's mini-tutorial).

In "[Translations](#)" directory, there is a package named peazip-x.y.about_translations.zip containing a spreadsheet file to help in creating and maintaining localizations, simply compiling column D of the spreadsheet.

The spreadsheet shows variable name (column B), corresponding text string in English (column C) and a blank, yellow column (D) for typing the translated text strings.

On the right, a column E (blue) will show the "variable_name: " part assembled with the translated string: the content of this area can be copied and paste to replace the text in "=== PeaZip text group ===" and "=== PeaLauncher text group ===" sections (the spreadsheet features TWO pages, one for each of the two groups).

Lines must be pasted in the original order (it is sufficient to sort them by column F).

After column F are featured all currently available translations, in order to help translators more proficient in other languages than English, and to help to spot out what localizations need to be updated.

At each version all language files are mass-updated, with missing text lines in English; to update a localization, it's enough to update the English text lines.

For a better result it is also recommended to check all the language file to see if the update is coherent with linguistic style used by the translator of the current version.

For languages spoken in different ways in different countries (i.e. English, Spanish, Portuguese...) it is recommended to fork the translation, creating i.e. en-us, pt-br etc

PeaZip can load out of order (not optimal for performances) language files for older or newer versions.

IMPORTANT: the spreadsheet contains 3 pages, "PeaZip text group", "PeaLauncher text group", and "About text group": all pages need to be completed and pasted (column E, for first two pages) in the language file; the "About text group" can be freely edited.

Translated language files can be sent to giorgio.tani.software@gmail.com, to be evaluated for inclusion in future updates or publication in <http://sourceforge.net/projects/peazip/files/Translations/>

All translated language files should be considered as released under GFDL, GNU Free Documentation License, as they have to be considered derivate work from the application's language file which is released under [GFDL](#).

Configuration, themes and bookmarks files, saved archive layouts, task logs and exported command lines are saved as UTF-8 encoded text. Older archive layouts saved as ANSI text by very old (pre-2.2) versions of PeaZip can still be used..

Notes

SendTo and context menu

Launching the program through links in SendTo, or any other link to the application, or through scripts, allows receiving multiple input arguments for each instance of the program, while entries in Windows' context menu, by design, can receive a single input argument for each instance.

PeaZip's Context Menu items can handle multiple input argument through a temporary files list, the temporary files are automatically deleted (otherwise the mechanism would not function), and in any case it is possible to force deleting them in Options > Settings > Reset peazip-tmp (or resetting PeaZip).

For a similar Windows' design choice, on pre-Windows 7 systems, program's entries in Windows context menu are not grouped in a submenu since it will involve much more complex approach than creating separate registry entries; registry method is now (for Windows 7 and later) recommended over the previous COM method.

SendTo menu are simple link files, they can be freely renamed, or have the icon changed, and can be copied or moved to one user to another as needed, they are located in C:\Documents and Settings\(\username)\SendTo (Windows XP) or C:\Users\(\username)\AppData\Roaming\Microsoft\Windows\SendTo (Vista/7), assuming C: as system's disk.

All available SendTo links are featured in SendTo.zip file in PeaZip's path, more can be built using the switches explained in "Customisation and scripting".

Context menu entries are written in the registry; the exact location, different in 7 and previous systems, can be read in the InnoSetup scripts in "installer" dir of source package. They can be modified using a registry editor, but manually modifying registry is not generally recommended to users.

Creation of RAR archives

No free software application can create RAR archives, unless the operation is performed invoking WinRAR binary itself, because the RAR format is proprietary, moreover, the UnRAR license explicitly disallows to reverse engineer the file format definitions implemented to build functional RAR creation software.

With WinRAR installed you can use PeaZip's "Custom" archive type interface to use rar.exe to create RAR format archives through PeaZip's GUI: chose "Custom" format in compression dialog and the first time go to "Advanced" tab to tell PeaZip how to use the executable

1 - locate where the rar.exe executable is in your system, in "Executable" field

2 - write a (which stands for create archive) in "Parameters" field

3 - select the second entry in "Syntax" dropdown menu: "parameters, output, input"

Now any time you will select "Custom" format compression PeaZip will automatically use the syntax

rar.exe a nameofthearchive nameoftheinputfiles

Please note that rar.exe command line syntax is not a 1:1 replacement of WinRAR features, especially worth of notice is that "a" command creates the archive storing full paths (and creation storing relative paths option is not even featured) while WinRAR GUI application creates by default archives storing relative paths.

Extraction of RAR5 archives

Since PeaZip 5.9.0 release the non-free UnRAR5 Plugin is no longer needed neither on Windows nor on Linux to extract RARv5 files, but the plugin (contains Eugene Roshal RarLab's unrar) is still provided on Add-ons page as alternative RAR5 extraction engine, and for older versions support.

ACE archives

Unace may require to interactively respond to some warning messages extracting archives (i.e. if an object with this name already exists in the output path), or to enter a password for handling an encrypted archive. If the console is not available for user's input (as when calling unace through pealauncher), the feedback cannot be sent: to avoid this possible stall situation unace extraction and test operations are always called in console mode.

Please note that from PeaZip 1.9.1 the program's base packages contain only open source software, so handling ACE archives will require installing a separate component described in "Plugin" chapter.

Office, Open Office, MSI, EXE files...

Many file formats are actually containers composed by resource objects which can be browsed and extracted using PeaZip.

However since those file types are not commonly used as archives themselves (for browsing or for extraction of resources), PeaZip by default don't handle them as archives, unless explicitly asked with "Open as archive" function. Consequently, double clicking on files of those types within PeaZip starts the associated application rather than opening them as archives.

UTF-8 support

PeaZip GUI is fully UTF-8 compliant (since release 2.2.0), and internal filename handling functions can work with UTF-8 filenames since release 3.0.1 in Linux, and since release 5.8.0 in Windows (on Windows platform, internal filesystem and string management functions were made fully Unicode aware since 6.0.0 release compiled with Lazarus 1.6/FPC3.0).

PeaZip can generate UTF-8 archiving/extraction scripts ("Console" tab).

For more information check UTF-8 support status in [Lazarus](#) and in PeaZip sources comments.

Compilation, build and porting

PeaZip, Pea and PeaLauncher are written in FreePascal (highly compatible with Delphi and ObjectPascal languages) and require [Lazarus IDE](#) to be compiled; Windows setup scripts (.iss files) are developed using Inno Setup.

To compile PeaZip binaries open the .lpi file of the desired binary (i.e. peach.lpi for peazip binary) and select "build all".

FreePascal supports multiple widgetsets (Win32, WinCE, GTK1, GTK2, Qt, Carbon, fpGUI) to allow compilation of GUI applications for the various supported systems and to create different "flavours" of the application for platforms supporting multiple widgetsets (i.e. Linux).

PeaZip's sourcecode is cross platform, platform-specific code portions are contained in conditional compilations blocks.

Deploying the application to other targets than MSWINDOWS, LINUX and BSD may require adaptation of those platform specific areas (and possibly other fine-tunings).

PeaZip will also need various backend compression and archiving applications to be reachable in expected directories within the application's path, please refer to the structure of any of the precompiled packages, either installable or portable, to see what third parts binaries must be included, and refer to respective Authors for ports of those utilities.

Being PeaZip programmed as frontend/backend application, missing or unwanted backend binaries can be omitted, at the cost of losing the ability of handling supported formats; for the same reason, backend binaries can be freely replaced with 64 bit counterparts or with updated versions (which will work fine as long as they follow the same syntax).

PeaZip code should be fairly easy to port on Delphi and other Pascal dialects; the underlying [crypto library](#) is explicitly written to be portable to most or all Pascal dialects, however due to some ASM parts some of its features may be x86 processor specific.

From version 2.5 PeaLauncher was extended to be also a standalone extraction application; this could make porting easier at least for basic extraction features, since its user interface is more simpler than PeaZip's one.

Qt issues

Currently, Lazarus/FreePascal IDE support for Qt widgetset, on Linux platform, is less mature than support for GTK2.

It means under some circumstances some unexpected behaviours may show, due to issues between the version of Qt PeaZip is compiled for and the one featured by the host system; know issues are:

- in some cases the drag and drop from system to the Qt version of the application will not work
- in some cases PeaZip will run only starting it with `-style=cleanlooks` parameter (this is not inherited when PeaZip starts other processes, which consequently may not run)

Experiencing problem with Qt version, it is recommended to use GTK2 version, that can run on KDE as well (as Qt version can run on Gnome as well) because PeaZip is meant to be as desktop and widgetset independent as possible.

Install/uninstall on Linux

On Linux systems, PeaZip installer automatically create menu entries for KDE (on most versions); to add PeaZip to Gnome menu copy the "Archiving" folder placed in PeaZip/FreeDesktop_integration/nautilus-scripts to system's Nautilus script's folder (in most versions open "Scripts" menu in system's context menu, and select "Open script's folder").

PeaZip is meant to be desktop independent as possible, so it is not limited to be used under KDE and Gnome, and does not requires different packages to run on different desktop environments.

On PeaZip's official website are featured generic Linux packages, meant to be compatible with as many distributions and versions as possible, providing the system supports the widgetset (GTK2 * or Qt **)

DEB ***: Debian, Ubuntu/Kubuntu, Knoppix, ...

RPM: Fedora, Mandriva, SUSE, Red Hat, ArkLinux, ...

TGZ: Slackware based.

TAR.GZ (PeaZip Portable) does not need to be installed, so it is the recommended package if you just want to test the application. It can be used on any Linux family extracting the package and running peazip binary in program's directory.

Installable Linux packages are built without some back-end for less common file formats (ARC, PAQ, etc) in order to reduce dependencies the main package rely on. Those back-end are available as separate plugins in Add-ons page.

Third parts packages explicitly targeted to a specific distribution/version are listed on the download page below the official generic packages, those packages are highly recommended for best integration with a specific Linux distribution and version.

If a package does not run on a specific system please launch peazip binary on a console to get a more detailed error report.

* On some Linux distributions the GTK2 version may require to install some components of gtk/gdk libraries, like libgdk_pixbuf, those components are quite common and can be usually found in repositories of each distribution.

** Qt widgetset packages requires Qt 4.3.4 or more recent, and needs libqt4intl.so and libqt4pas5 installed in /usr/local/lib or equivalent directory (copy the file and run ldconfig; it is done automatically in installable packages), such as /usr/lib or /usr/lib32 on some 64 bit distributions. A copy of libqt4intl.so is available in PeaZip's directory, ./usr/local/share/PeaZip/ for the installable packages. You can get most up to date missing libraries using distribution-specific ways, i.e. apt-get install libqt4pas5:i386

*** DEB packages reports (all) for architecture check, so can be installed on 32 and 64 bit systems (providing that ia-32 libs are available).

Note for third parts packagers: those packages can be transformed in i386 DEB if desired; i386 DEB can anyway be installed on 64 bit systems using `dpkg -i --force-architecture`

Please note that ia32-libs are required to run any 32 bit binary on 64 bit systems.
PeaZip binaries are currently compiled for 32 bit, you will need Lazarus/FPC if you want to compile them from sources.
All backend compression/extraction "engines" (pea, p7zip, *paq, freearc etc) are compiled for 32 bit, please refer to respective Authors for source packages (all are released under OSI approved Open Source licenses) if you want to recompile them.